

*the*  
COLLECTION

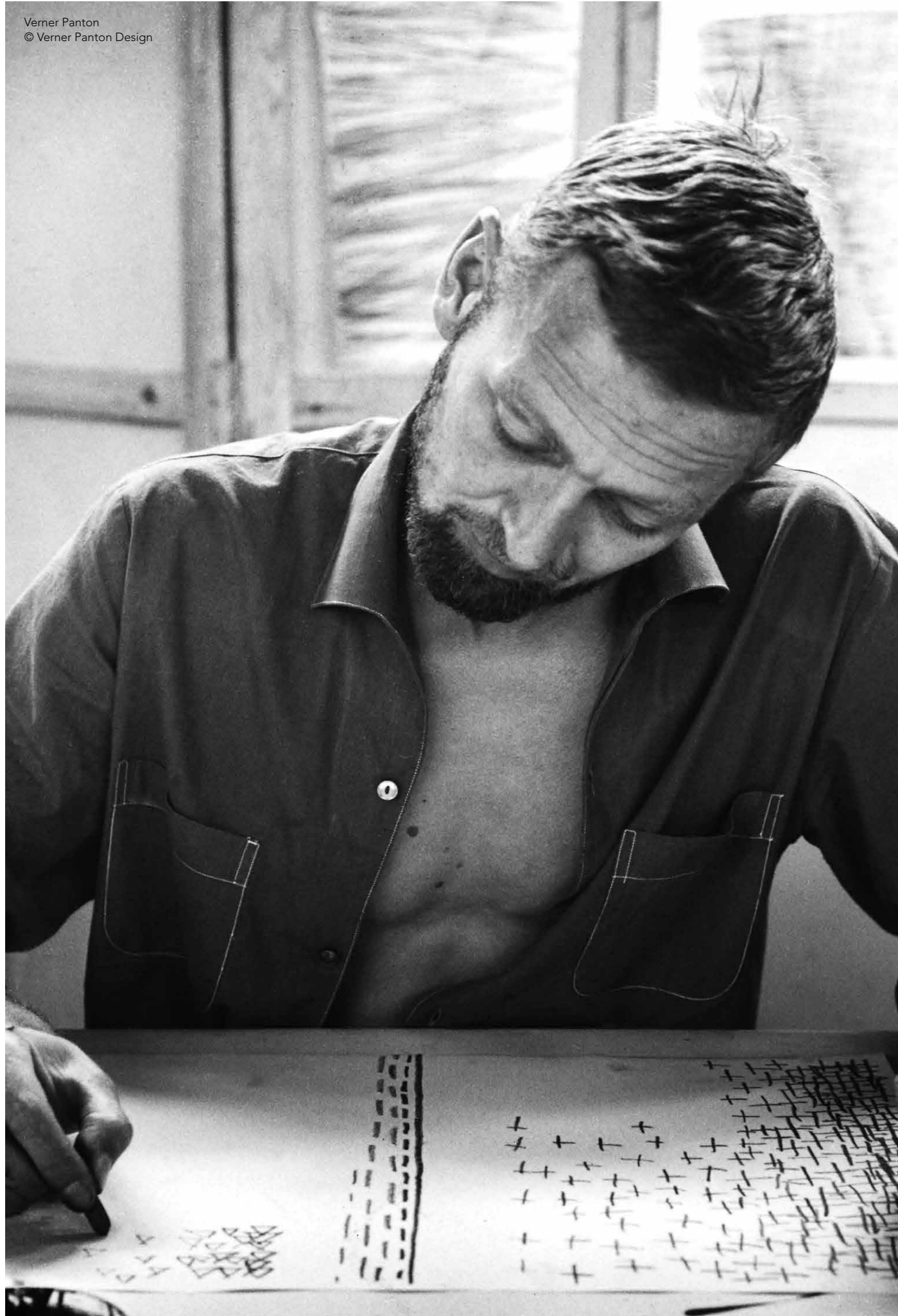


FURNITURE & LIGHTING

DESIGNED BY VERNER PANTON  
MANUFACTURED BY VERPAN

**VERPAN**

Verner Panton  
© Verner Panton Design



# Verner Panton

Among the giants of Danish design, Verner Panton established a unique reputation for his exuberant originality and tireless experimentation. Panton created lamps, furniture and textiles – and was also a sought-after interior designer. Although he was at the forefront of mid-century Danish Modern, Panton's contribution was anything but mainstream.

He enthusiastically embraced new materials, he splashed with a bold colour palette, and he playfully imbued many of his sculptural creations with a strong graphical expression – without ever compromising on quality or workmanship.

Panton's iconic designs have emerged as contemporary design classics – as strikingly inventive now as they were 50 years ago.

Verpan is - much like Verner Panton - a product of the Danish design tradition, which have put Denmark on the world map for functional, modern and unique design.

The story of Verpan began in 2003, when the first production of Verner Panton lighting was initiated. In 2010 a furniture range was added. A continuous process of picking and choosing products from the vast treasure chest of Panton's work ensures a strong portfolio of amazing designs.

Verpan is proud to carry on the legacy of Verner Panton as an official licensee of Verner Panton Design AG - the exclusive owner of all Verner Panton designs.

# CON TENTS

SPACES	06-07
SUSTAINABILITY	08-09

## FURNITURE

CLOVERLEAF COLLECTION	14-31
PANTO POP	32-33
VP168 SOFA	34-37
WELLE	38-43
FLYING CHAIR	44-47
FLEX CHAIR	48-55
SERIES 430 COLLECTION	56-87
MOVE TABLE	88-89
SYSTEM 1-2-3 COLLECTION	90-101
BARBOY	102-105
MIRROR SCULPTURES	106-107
RUGS	108-113
THROWS	114-117
UPHOLSTERY PROGRAM	118-119

## LIGHTING

FUN COLLECTION	122-137
VP GLOBE COLLECTION	138-149
VP PANTO	150-153
HIVE	154-157
SPIEGEL	158-161
SPIRAL COLLECTION	162-171
PANTOP COLLECTION	172-173
REFLECT	174-177
WIRE COLLECTION	178-181
MOON	182-189
ONION	190-191



# SPACES

The Verpan product range offers extraordinary user experiences and facilitate new ways of living, working and interacting.

Panton's designs integrate with the surroundings through shape, motion, light and sound.

Our products are all contract certified as standard and made using modern manufacturing methods ensuring compliance with international environmental standards.

Our track record include residential, restaurants, hotels, corporate, retail stores, education, airports and more.

Discover more  
[www.verpan.com](http://www.verpan.com)





# SUSTAINABILITY

At Verpan we care about our social and environmental responsibilities.

We offer timeless design of high quality with long product life. Pantón's work continues to represent a high value, making a great case for resale or donation of product at end-of-use.

We introduce recyclable materials when possible and strive to develop products for easy assembly and disassembly - making it possible to replace and ultimately dispose damaged parts properly.

We work closely with our suppliers and logistics partners to ensure optimal production methods and minimize shipping and packaging.



## Recyclable.

The Cloverleaf In- & Outdoor Sofa is a great example of how our efforts materialize in real life. The sofa is extremely durable and made from 100% recyclable rotational molded PE polyethylen, meaning that at end-of-life, the material can be granulated and reused.

The sofa is modular and damaged parts can easily be replaced and ultimately disposed of properly.



## Construction.

In addition to the seat and back being manufactured in 100% recyclable polypropylene (PP), the Flex chair is assembled with standard screws, making it possible to disassemble the chair to replace parts and extend the product's lifecycle and ultimately dispose of parts in an environmentally friendly manner.

**“One sits more  
comfortably on  
a colour that  
one likes.”**

- Verner Panton



**FURNITURE**

# CLOVERLEAF

## Sofa

by Verner Panton, 1969

### WHY WE LOVE IT

Unique yet highly functional design  
Great seating comfort and support  
Infinite seating options  
Modular and highly customizable  
Great for high traffic areas

### SUGGESTED APPLICATION

Airport  
Care  
Learning  
Work  
Hospitality

### MATERIAL

FSC-approved wood frame (18 mm/0.7" plywood & pine wood)  
CMHR (CRIB 5) or HR (Cal 117) foam for seat and backrest  
Metal interlockers  
Adjustable nylon glides

### DIMENSIONS

#### LEFT AND RIGHT UNIT

L: 114.5 cm (45.1")  
W: 115.5 cm (45.3")  
H: 80 cm (31.5")  
Seat height: 40 cm (15.7")  
Weight: 112 kg.

#### EXTENSION UNIT

L: 130 cm (51.2")  
W: 113 cm (44.5")  
H: 80 cm (31.5")  
Seat height: 40 cm (15.7")  
Weight: 135 kg.

#### MIDDLE UNIT

L: 142 cm (55.9")  
W: 158 cm (62.2")  
H: 80 cm (31.5")  
Seat height: 40 cm (15.7")  
Weight: 142 kg.

### STANDARD UPHOLSTERY OPTIONS

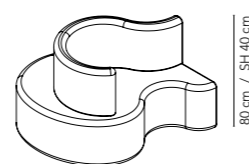
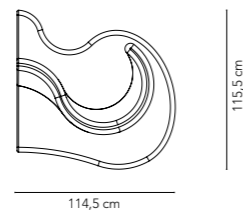
Kvadrat  
Skai  
JAB  
Dedar  
Sørensen Leather

### MADE-TO-ORDER OPTIONS

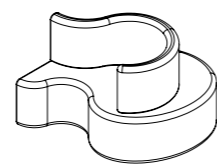
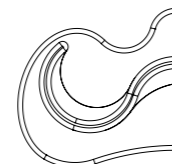
Integrated power/charging station  
COM upholstery  
Plinth

### UNITS

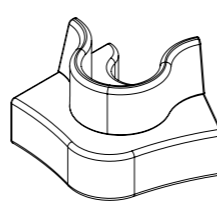
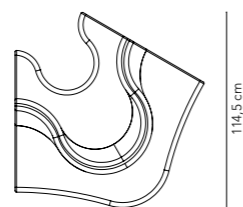
#### LEFT



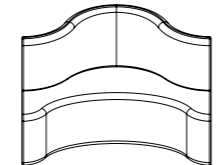
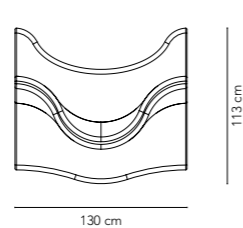
#### RIGHT



#### MIDDLE



#### EXTENSION



Reference: ARoS Museum of Art  
Product: Cloverleaf Sofa (5-unit)  
Upholstery: Hallingdal 220 / Kvadrat





# CORPORATE



Upholstery  
Five-unit: Outback 851 / Kvadrat  
Three-unit: Tonica 832 / Kvadrat  
Five-unit: Harald 3.182 / Kvadrat

## BESTSELLER HQ

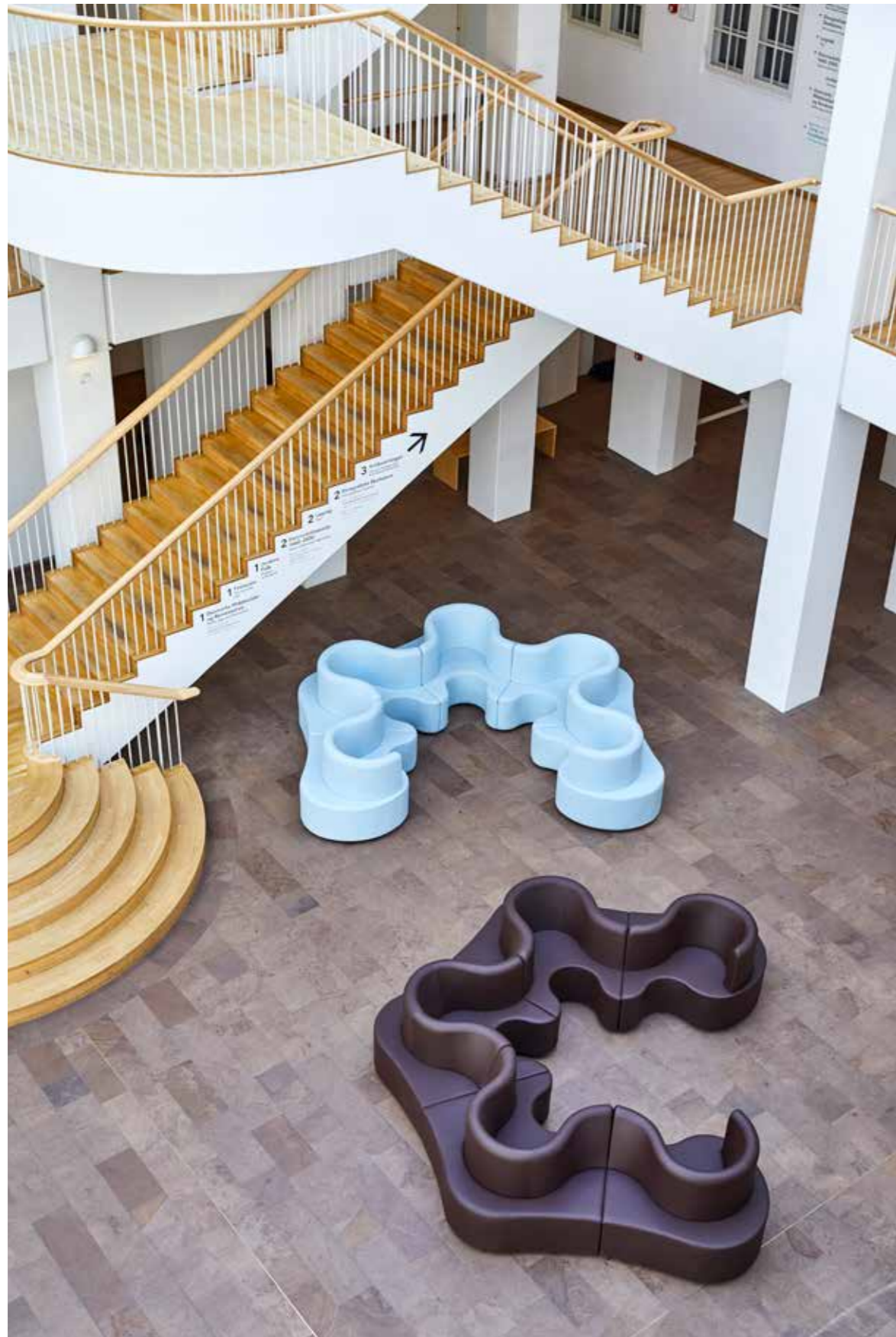
Aarhus, Denmark

For Bestseller's HQ in Aarhus, the clothing company chose one three-unit and two five-unit Cloverleaf sofas for the large entrance/waiting area.

The organic expression of the Cloverleaf sofa gently breaks up and softens the space - perfectly complementing the beautiful architecture.







Reference: The Museum of National History / Copenhagen  
 Product: 2 x Cloverleaf Sofa (5-unit)  
 Upholstery: Pandoria Plus F6413051 (schoko) & F6413055 (gletscher) / Skai  
 Architect: Paustian







Reference: Restaurant Brahms Haus Der Musik / Innsbruck  
Product: Cloverleaf Sofa (5-unit)  
Upholstery: Harald 3 182 / Kvadrat  
Photo credit: Günther Egger



# AIR PORT



## SEATTLE-TACOMA INTERNATIONAL AIRPORT

Seattle, Washington

A collection of upholstered Cloverleaf sofas with integrated power. The organic and sculptural design softly breaks the lines of the otherwise strict layout of the airport and offers a fun and colourful alternative to the classic Vitra seating system.

Image credit: Vitra



# CLOVERLEAF

## In- & Outdoor

by Verner Pantón, 1969

### WHY WE LOVE IT

100% recyclable material  
Works equally great indoors and outdoors  
Infinite seating options  
Modular and highly customizable  
Extremely durable  
Easy to clean and maintain

### SUGGESTED APPLICATION

Outdoor  
Care  
Learning  
Work  
Hospitality

### MATERIAL

100% recyclable rotational molded PE polyethylen.

### DIMENSIONS

#### LEFT AND RIGHT UNIT

L: 114.5 cm (45.1")  
W: 115.5 cm (45.3")  
H: 80 cm (31.5")  
Seat height: 40 cm (15.7")  
Weight: 40 kg.

#### EXTENSION UNIT

L: 130 cm (51.2")  
W: 113 cm (44.5")  
H: 80 cm (31.5")  
Seat height: 40 cm (15.7")  
Weight: 47 kg.

#### MIDDLE UNIT

L: 142 cm (55.9")  
W: 158 cm (62.2")  
H: 80 cm (31.5")  
Seat height: 40 cm (15.7")  
Weight: 51 kg.

### STANDARD COLOURS

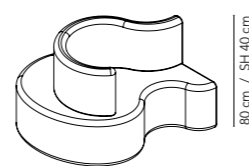
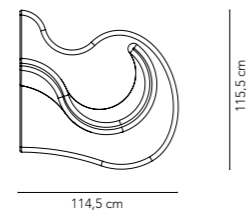


### MADE-TO-ORDER OPTIONS

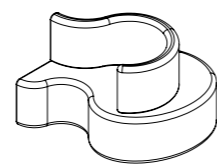
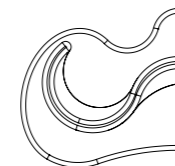
Integrated power/charging station  
Custom RAL colours  
Plinth (indoor use only)

### UNITS

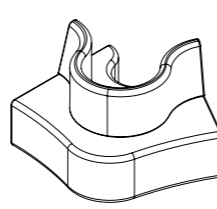
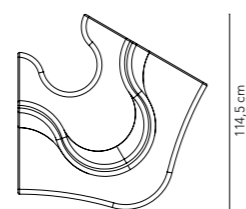
#### LEFT



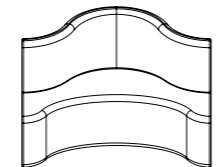
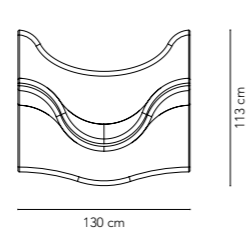
#### RIGHT



#### MIDDLE



#### EXTENSION



Reference: KPN Tower / Rotterdam  
Product: Cloverleaf In- & Outdoor (5-unit)  
Colour: Standard white  
Photo credit: Annette Prinssen







Reference: Danish Architecture Center / Copenhagen  
Product: Cloverleaf In- & Outdoor (6-unit)  
Colour: Custom RAL  
Architect: Danielsen Space Planning & Holmris B8





Reference: Street Food / Aarhus  
 Product: Cloverleaf In- & Outdoor (4-unit)  
 Colour: Standard white



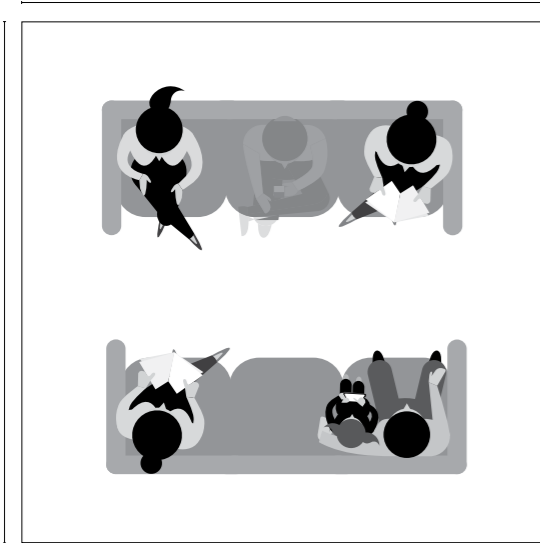


# CLOVERLEAF SOFA

## Space Management

350 cm

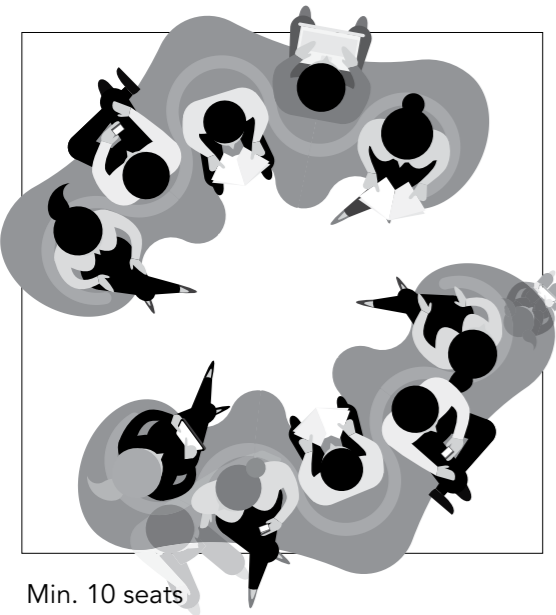
350 cm



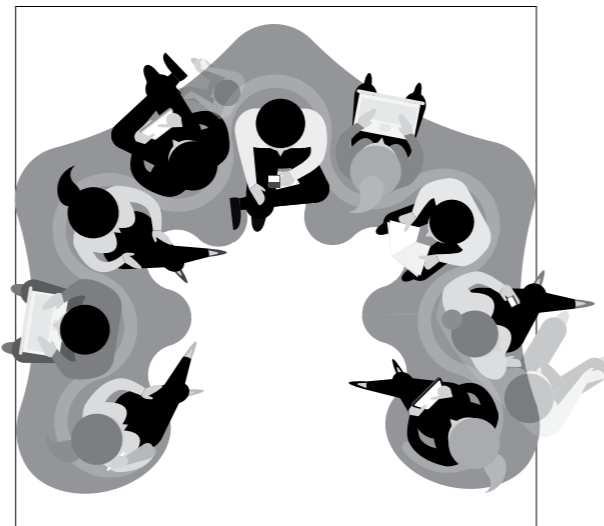
Max. 6 seats



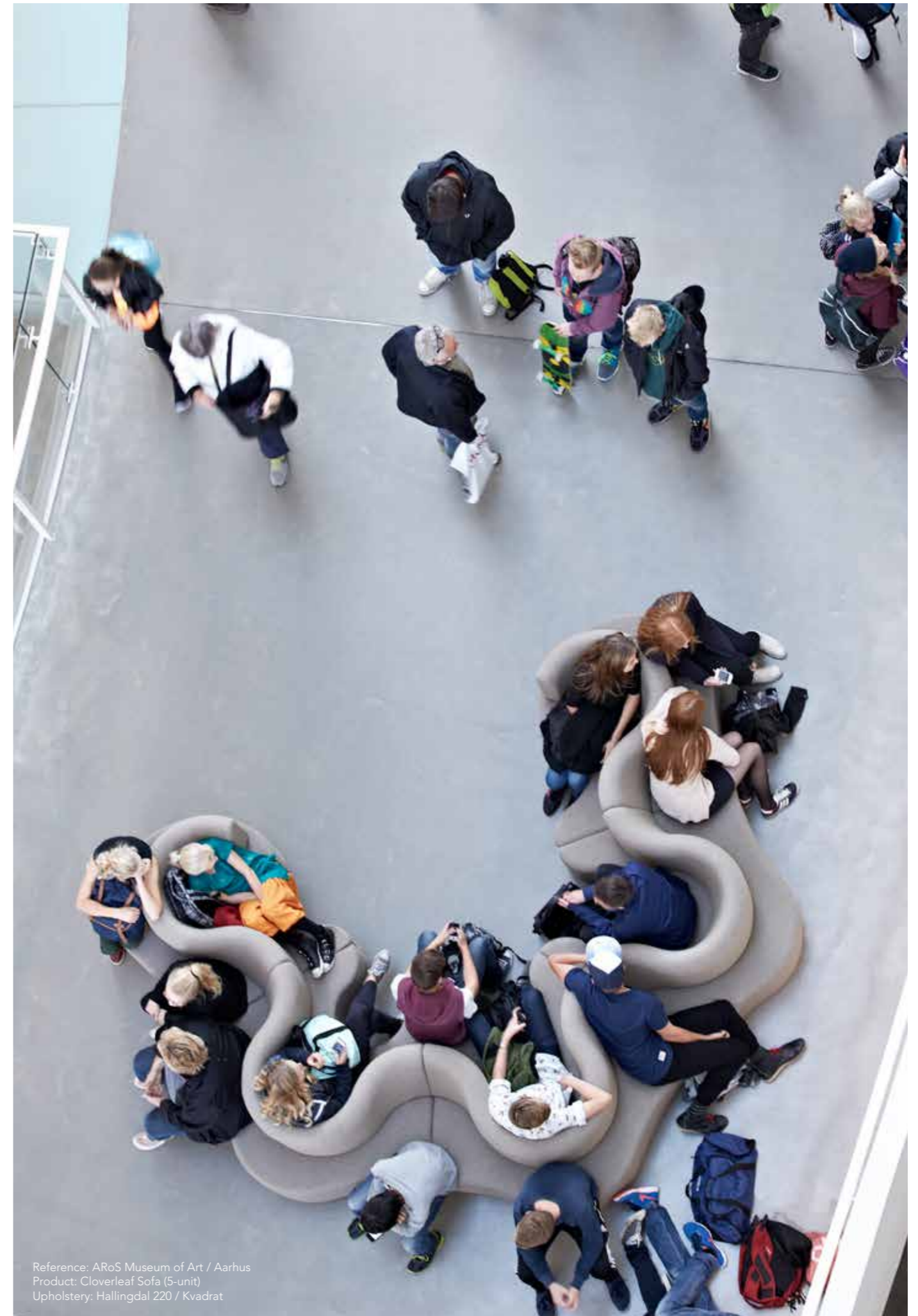
Min. 7 seats



Min. 10 seats



Min. 11 seats



Reference: ARoS Museum of Art / Aarhus  
Product: Cloverleaf Sofa (5-unit)  
Upholstery: Hallingdal 220 / Kvadrat



# PANTO POP

## Lounge Chair

by Verner Panton, 1969

### WHY WE LOVE IT

Outdoor use  
Great for occasional use  
Stackable  
Easy to move and store

### SUGGESTED APPLICATION

Outdoor  
Learning  
Care  
Hospitality  
Work

### MATERIAL

ABS resin

### DIMENSIONS

H: 54 cm (21.3")  
Ø81 cm (31.8")  
Weight: 4 kg.

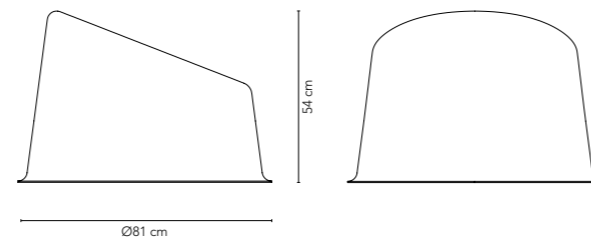
### COLOURS

White

### MADE-TO-ORDER OPTIONS

Custom colours

### DETAILS



Reference: Læssøesgade School / Aarhus  
Product: Panto Pop



# VP168

## Sofa

by Verner Panton, 1987

### WHY WE LOVE IT

Fully upholstered three-seater with pocket springs  
Spacious and comfortable lounge sofa  
Significant and balanced proportions  
The enveloping design creates a private space  
Comes with a set of matching pillows

### SUGGESTED APPLICATION

Care  
Learning  
Work  
Hospitality  
Residential

### MATERIAL

Frame and base in FSC certified wood  
CMHR (CRIB 5) or HR (Cal 117) foam for seat and backrest  
Pocket springs in seat  
Pillows filled with natural feathers

### DIMENSIONS

Length: 253,5 cm (99.8")  
Depth: 95 cm (37.4")  
Height: 78,8 cm (31")  
Seat height: 43,8 cm (17.2")  
Weight: 110 kg.

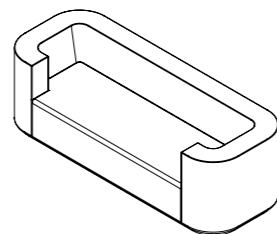
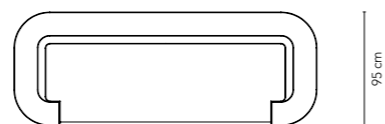
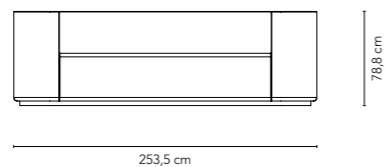
### STANDARD UPHOLSTERY OPTIONS

Kvadrat  
Skai  
JAB  
Dedar  
Sørensen Leather

### MADE-TO-ORDER OPTIONS

COM upholstery

### DETAILS







Upholstery:  
VP168 Sofa - Harald 3 982 / Kvadrat  
System 1-2-3 Lounge - Pilot 972 / Kvadrat

# WELLE

## Lounge Chairs

by Verner Panton, 1969

### WHY WE LOVE IT

Very versatile - use as single piece or create your own landscape  
Fun & organic design  
Highly comfortable  
Great for social interaction

### SUGGESTED APPLICATION

Care  
Learning  
Work  
Hospitality  
Residential

### MATERIAL

FSC-approved wood frame (15 mm/0.6" plywood)  
CMHR (CRIB 5) or HR (Cal 117) foam

### DIMENSIONS

#### WELLE 1

L: 162 cm (63.8")  
H: 102 cm (40.2")  
W: 50 cm (19.7")  
Weight: 26,5 kg.

#### WELLE 4

L: 140 cm (55.1")  
H: 63 cm (24.8")  
W: 50 cm (19.7")  
Weight: 16 kg.

#### WELLE 2

L: 108 cm (42.5")  
H: 80 cm (31.5")  
W: 50 cm (19.7")  
Weight: 17,5 kg.

#### WELLE 5

L: 108 cm (42.5")  
H: 40 cm (15.7")  
W: 50 cm (19.7")  
Weight: 12 kg.

#### WELLE 3

L: 240 cm (94.5")  
H: 70 cm (31.5")  
W: 50 cm (19.7")  
Weight: 33 kg.

#### WELLE 6

L: 54 cm (21.3")  
H: 40 cm (15.7")  
W: 50 cm (19.7")  
Weight: 5,5 kg.

### STANDARD UPHOLSTERY OPTIONS

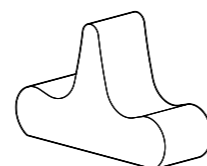
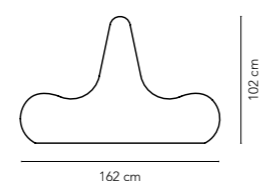
Kvadrat  
Skai  
JAB  
Dedar  
Sørensen Leather

### MADE-TO-ORDER OPTIONS

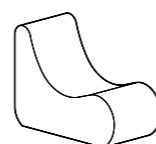
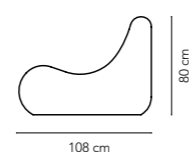
Integrated power/charging station  
COM upholstery  
Plinth

### UNITS

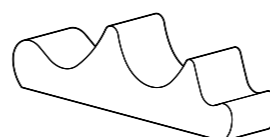
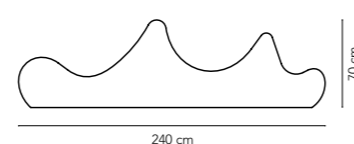
#### Welle 1



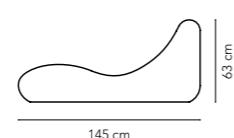
#### Welle 2



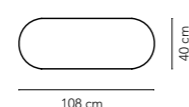
#### Welle 3



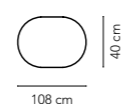
#### Welle 4



#### Welle 5



#### Welle 6



Reference: Egaa Gymnasium / Aarhus  
Product: Welle 1, 3 & 6  
Upholstery: Tonus 4 440 / Kvadrat





Reference: Egaa Gymnasium / Aarhus  
Product: Welle 1, 3 & 6  
Upholstery: Tonus 4 440 / Kvadrat

# LIBRARY

## SELSDON PUBLIC LIBRARY

South Croydon, London

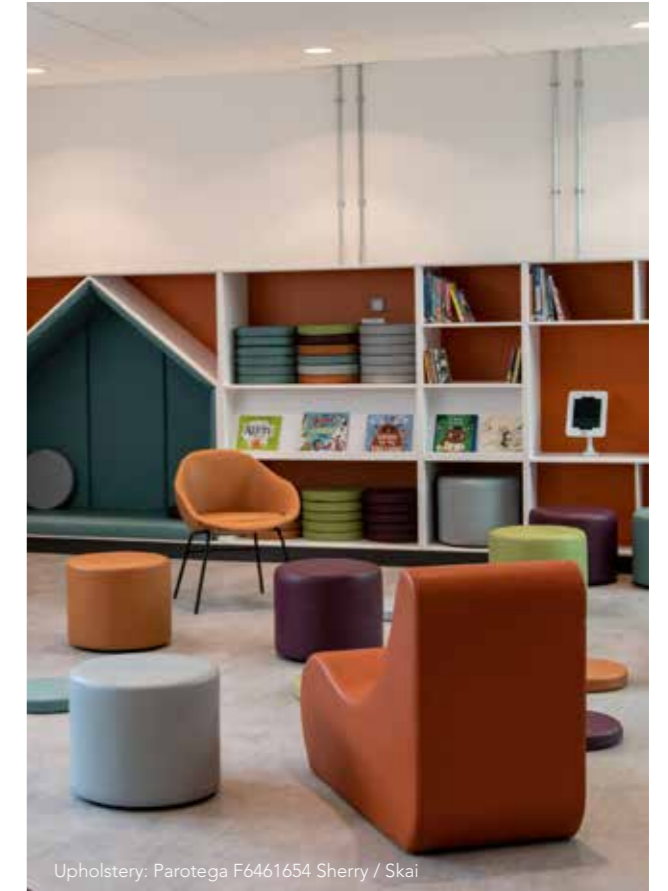
After being closed for two months for a major refurbishment, Selsdon Library in London, reopened with a completely new and fresh look. For the project, Verpan has supplied a number of the comfortable Welle 2 lounge furniture.

Photo credit: Form Fit-Out

COLLECTION



Upholstery: ParotegaF6461664 Amethyst / Skai



Upholstery: Parotega F6461654 Sherry / Skai





# FLYING CHAIR

## Lounge Chair

by Verner Panton, 1964

### WHY WE LOVE IT

Iconic Panton design  
Adjustable suspension lounge chair  
Fun and interesting piece for creative spaces  
Inspires you to think differently

### SUGGESTED APPLICATION

Learning  
Work  
Hospitality  
Residential

### MATERIAL

FSC-approved form pressed plywood  
Supporting steel frame  
PU foam  
Polyester ropes with steel fixtures

### DIMENSIONS

Length: 150 cm (59")  
Width: 80 cm (31.5")  
Hanging height/rope length: 200 cm (78.7")  
Weight: 23 kg.

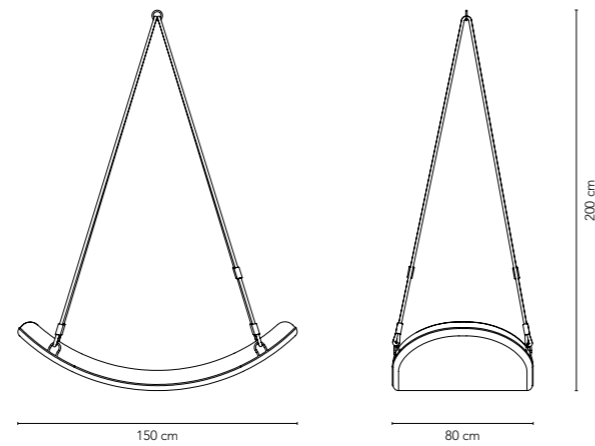
### STANDARD UPHOLSTERY OPTIONS

Kvadrat  
Skai  
JAB  
Dedar  
Sørensen Leather

### MADE-TO-ORDER OPTIONS

COM upholstery

### DETAILS



Upholstery: Vidar 472 / Kvadrat



Reference: Exhibition Space / Innsbruck  
Product: Flying Chair  
Upholstery: Hallingdal 600 / Kvadrat  
Photo credit: Günther Egger





# FLEX

## Chair

by Verner Panton, 1960

### WHY WE LOVE IT

Sculptural organic aesthetics  
Thoughtful ergonomics gives great seating comfort  
Very versatile & stacks for easy storage  
Made from 100% recyclable PP  
Easy to disassemble for repair and ultimately disposal

### SUGGESTED APPLICATION

Care  
Learning  
Work  
Hospitality  
Residential

### MATERIAL

Polypropylene (PP) seat and backrest  
Painted metal frame  
Plastic gliders with felt feet

### DIMENSIONS

Height: 89 cm (35")  
Seat height: 46 cm (18.1")  
Seat width: 42,8 cm (16.8")  
Total depth: 53,5 cm (21")  
Total width: 50,5 cm (19.9")  
Weight: 7 kg.

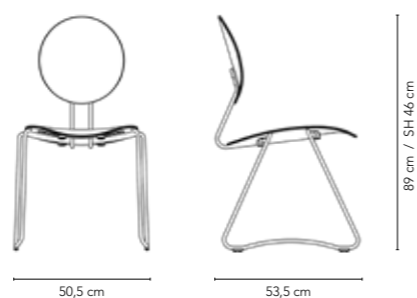
### STANDARD COLOURS



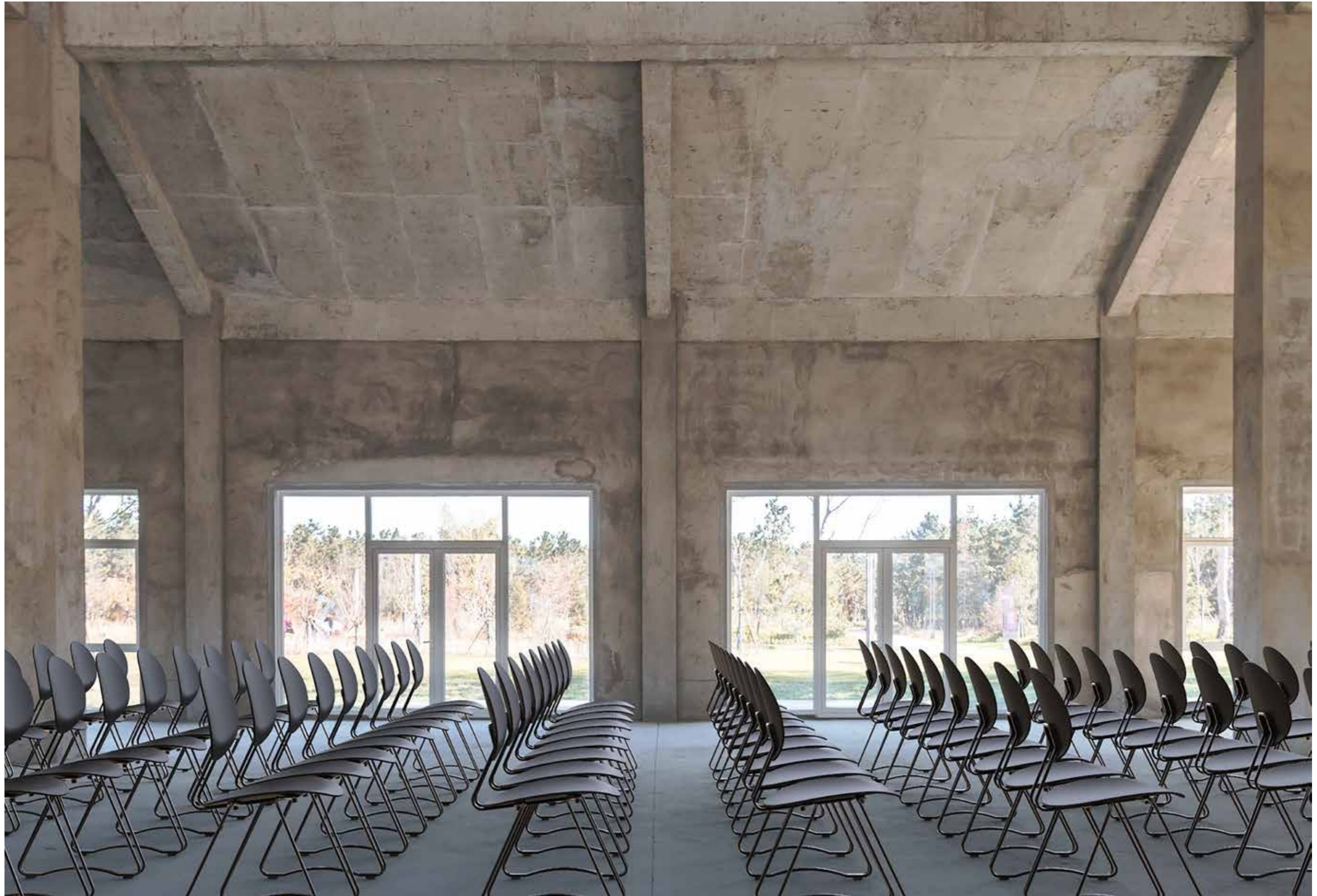
### MADE-TO-ORDER OPTIONS

Custom colour painted frame  
Custom colour seat and backrest  
Upholstered seat and back  
Linking  
Stacking cart

### DETAILS









# FLEX CHAIR

True to Panton's heritage, the Flex chair features exceptional ergonomic features, simple organic aesthetics and a functional and pragmatic approach to materials. The multi-purpose and stackable chair is tested and certified for contract use and works perfect for anything from conference, hospitality, hotel and other public spaces.

Panton designed the characteristic shape of the seat and back to fit the contours of the human body – providing proper lumbar support and secure a healthy blood flow to the legs. In addition, the frame is designed to offer flexibility and bounce – further improving the seating experience.

The seat and backrest is made from 100% recyclable polypropylene (PP), a material known for its crisp and pleasant surface character, high rigidity, durability and scratch resistant qualities. The chair sits on a powder-coated sledge steel frame. Flex chair is available in black and slate.







# SERIES 430

## Chair

by Verner Panton, 1967

### WHY WE LOVE IT

Outstanding comfort  
Understated elegance  
Highly customizable  
Super versatile  
Easy to clean  
Fully upholstered

### SUGGESTED APPLICATION

Learning  
Care  
Hospitality  
Work  
Residential

### MATERIAL

FSC-approved wood for seat and back  
Elastic band webbing in the seat  
CMHR (CRIB 5) or HR (Cal 117) foam  
Brushed stainless steel frame (steel)  
Painted or plated metal frame (black, white, burgundy & brass)  
Felt feet

### DIMENSIONS

Height: 82 cm (32.3")  
Seat: Ø46 cm (17.7")  
Seat height: 47 cm (18.1")  
Total depth: 51,5 cm (20.3")  
Total width: 54 cm (21.3")  
Weight: 6,3 kg.

### STANDARD UPHOLSTERY OPTIONS

Kvadrat  
Skai  
JAB  
Dedar  
Sørensen Leather

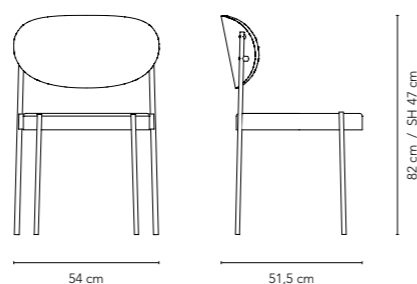
### FRAME OPTIONS



### MADE-TO-ORDER OPTIONS

Custom colour painted frame  
COM upholstery  
Linking

### DETAILS



Upholstery: Harald 3 182 / Kvadrat



Upholstery: Vidar 3 333 / Kvadrat











Reference: Restaurant Beefbar / Budapest  
Product: Series 430 Chair  
Upholstery: COM  
Photo credit: Beefbar Budapest





## THE STUDENT HOTEL

Maastricht, Netherlands

Series 430 Chair for The Student Hotel in Maastricht.

Located in a former factory, the restaurant interior is bold and vibrant. It celebrates the heritage of both the site and the production process which used to take place in the old building.

The fresh interior is filled with playful objects and elements, while an industrial theme can be seen across the 3 levels of the restaurant.

Architect: Studio Modijefsky  
Photo credits: Maarten Willemstein



Upholstery: COM





## ROYAL OPERA HOUSE

After a three-year remodelling steered by Stanton Williams architects, the historic Royal Opera House in Covent Garden, London opens to the public. The remodelling project, dubbed 'Open Up' is an effort to make the space more accessible for a wider audience.

The Series 430 chair accompanies other design classics in the restaurant.

Architect: Stanton Williams  
Photocredit: James Newton



Upholstery: Savanna 222 & 262 / Kvadrat





Reference: Hotel Imperial / Copenhagen  
Product: Series 430 Chair  
Upholstery: Parotega F6461653 Kiesel / Skai





## 1HOTEL BROOKLYN BRIDGE

Brooklyn, New York

Named one of the 10 Best Hotels in New York City in Condé Nast Traveler's 2019 Choice Awards.

With spectacular views of the Manhattan skyline and the Brooklyn Bridge, this chic eco-friendly hotel is thoughtfully designed with an incredible attention to organic and sustainable solutions, such as LED lighting, recycled materials and a top-class farm-to-table restaurant.

The hotel is a popular venue for weddings, conferences and seminars.

Photo credit: 1Hotel Brooklyn Bridge

Upholstery: Main Line Plus Charcoal [View](#) Camille Fabrics



# SERIES 430

## Bar Stool

by Verner Panton, 1967

### WHY WE LOVE IT

Outstanding comfort  
Understated elegance  
Highly customizable  
Super versatile  
Easy to clean  
Fully upholstered

### SUGGESTED APPLICATION

Learning  
Care  
Hospitality  
Work  
Residential

### MATERIAL

FSC-approved wood for seat and back  
Elastic band webbing in the seat  
CMHR (CRIB 5) or HR (Cal 117) foam  
Painted or plated metal frame (black & brass)  
Felt feet

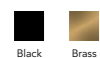
### DIMENSIONS

Seat height/height: 65 cm (25.6") / 100 cm (39.4")  
Seat height/height: 75 cm (29.5") / 110 cm (43.3")  
Seat: Ø46 cm (17.7")  
Total depth: 51,5 cm (20.3")  
Total width: 54 cm (21.3")  
Weight: 10/11 kg.

### STANDARD UPHOLSTERY OPTIONS

Kvadrat  
Skai  
JAB  
Dedar  
Sørensen Leather

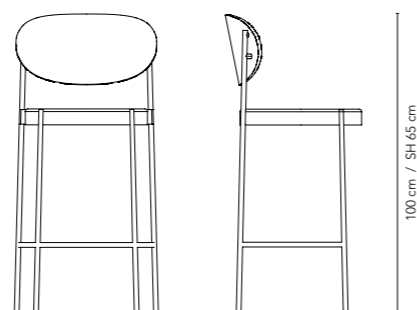
### FRAME OPTIONS



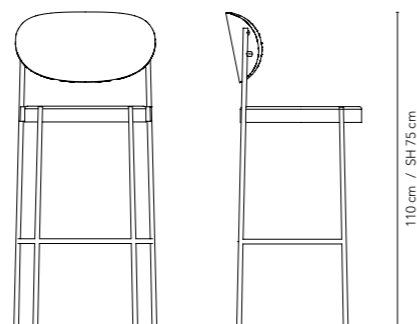
### MADE-TO-ORDER OPTIONS

Custom colour painted frame  
COM upholstery

### DETAILS



54 cm 51,5 cm 100 cm / SH 65 cm



54 cm 51,5 cm 110 cm / SH 75 cm



Reference: Hydro HQ / Oslo  
Product: Series 430 Bar Stool  
Upholstery: Ultra 41574 / Sørensen Leather  
Architect: Siv Amundsen  
Photo credit: Hydro





PURO  
HOTEL  
Łódź, Poland

For the amazing art deco inspired *Cinema Paradiso* space at the Puro Hotel in Łódź, Poland, Verpan supplied Series 430 Chairs and Bar Stool.

Photo credit: Anna Stathaki



Upholstery : COM





76

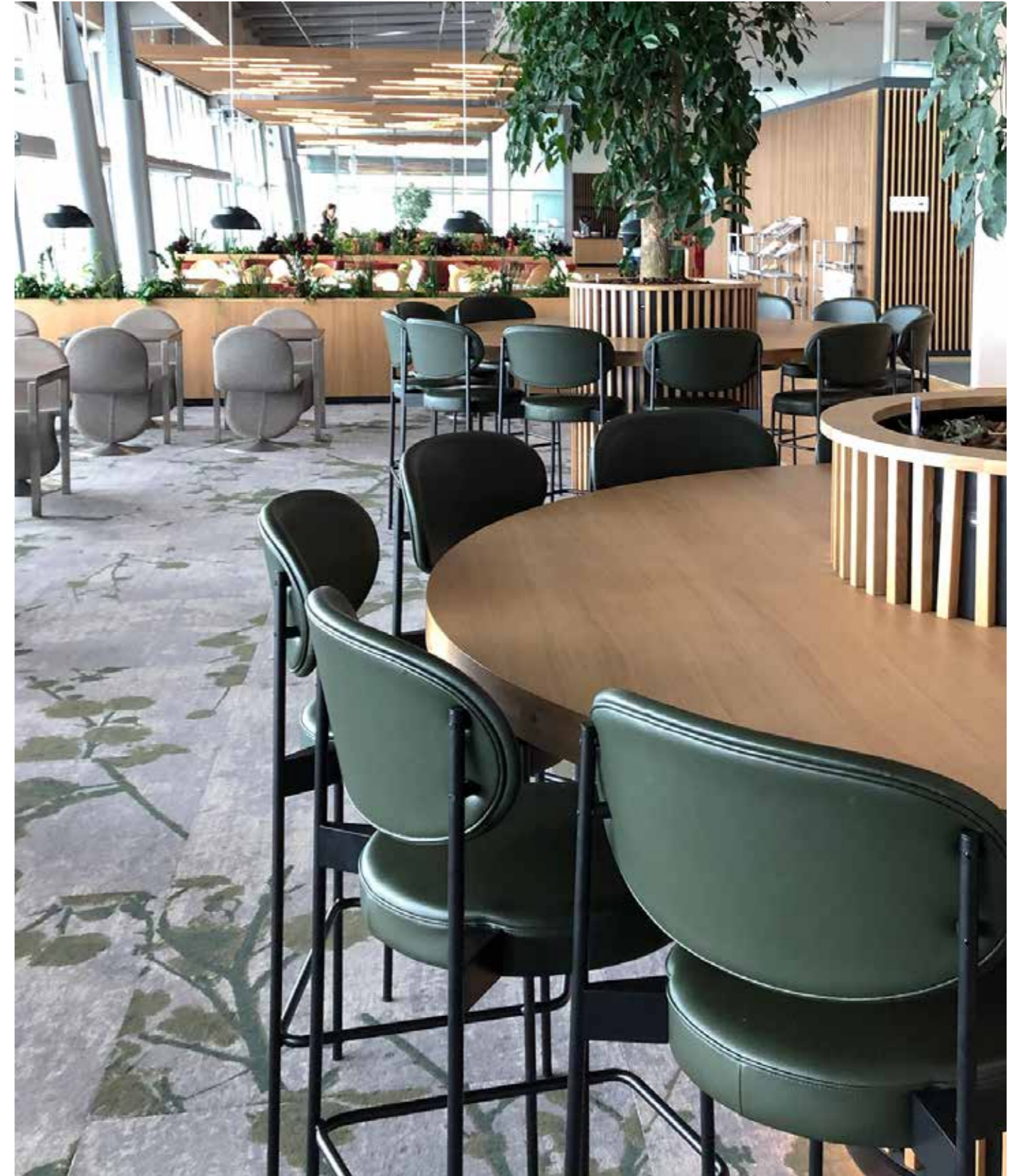
77

Upholstery - COM





Reference: Billund Airport / Billund  
 Product: Series 430 Bar Stool  
 Upholstery: Prestige 40676 / Sørensens Leather



Reference: Billund Airport / Billund  
 Product: Series 430 Bar Stool & System 1-2-3 Dining Chair  
 Upholstery: Prestige 40676 / Sørensens Leather & Hallingdal 270 / Kvadrat





Reference: Pharos Lighthouse / Hoofddorp  
Product: Series 430 Bar Stool  
Upholstery: COM  
Interior design: Sheryl Leysner  
Photo credit: Peter Tijhuis





82

83

Reference: Restaurant Sushi Samba / London  
Product: Series 430 Bar Stool  
Upholstery: Champion 1-3114-055 / JAB  
Interior design: Too Many Agencies  
Photo credit: Ming Tang Evans



# SERIES 430

## Stool

by Verner Panton, 1967

### WHY WE LOVE IT

Outstanding comfort  
Understated elegance  
Highly customizable  
Super versatile  
Fully upholstered

### SUGGESTED APPLICATION

Learning  
Care  
Hospitality  
Work  
Residential

### MATERIAL

FSC-approved wood for seat  
Elastic band webbing in the seat  
CMHR (CRIB 5) or HR (Cal 117) foam  
Painted metal frame (black & white)  
Felt feet

### DIMENSIONS

Height: 47 cm (18.1")  
Seat: Ø46 cm (17.7")  
Weight: 4 kg.

### STANDARD UPHOLSTERY OPTIONS

Kvadrat  
Skai  
JAB  
Dedar  
Sørensen Leather

### FRAME OPTIONS

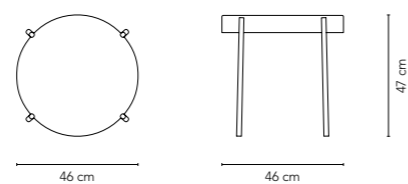


Black White

### MADE-TO-ORDER OPTIONS

Custom colour painted frame  
COM upholstery

### DETAILS



Upholstery : Harald 3 982 / Kvadrat



# SERIES 430

## Table

by Verner Panton, 1967

### WHY WE LOVE IT

A perfect match for the Series 430 Chair and Stool  
Sleek and elegant design  
Available in two sizes  
FENIX nanotech on the table top

### SUGGESTED APPLICATION

Work  
Hospitality  
Residential

### MATERIAL

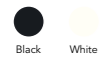
Powder coated metal legs  
MDF table top with Fenix nanotech laminate  
Height adjustable feet

### DIMENSIONS

Height: 75 cm (29.5")  
Ø120 cm (47.2") / Ø160 cm (63")  
Weight: 34 kg / 56 kg

### COLOURS

#### TABLE TOP



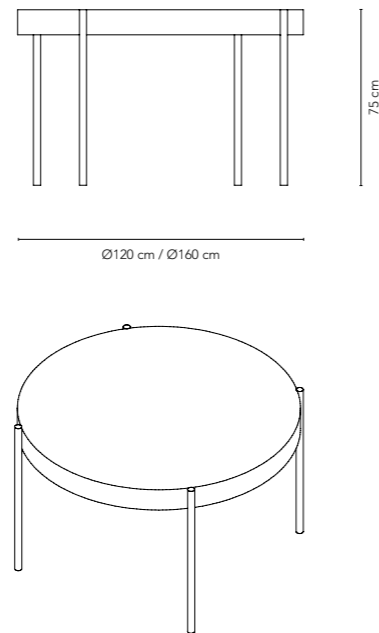
Black White

#### FRAME



Black White

### DETAILS



Upholstery: Crystal Field 153 / Kvadrat



# MOVE

## Table

by Verner Panton, 1972

### WHY WE LOVE IT

Super versatile design  
Lockable castors for mobility  
FENIX nanotech laminate on the table top

### SUGGESTED APPLICATION

Learning  
Work  
Hospitality  
Residential

### MATERIAL

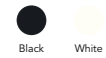
Frame made of powder coated square steel tube  
MDF table top with Fenix nanotech laminate  
Mounted with lockable TENTE wheels

### DIMENSIONS

Length: 200 cm (78.7")  
Width: 95 cm (37.4")  
Height: 76,5 cm (30.1")  
Weight: 45 kg

### COLOURS

#### TABLE TOP



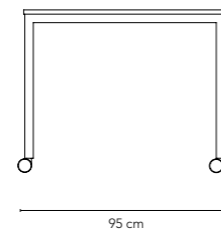
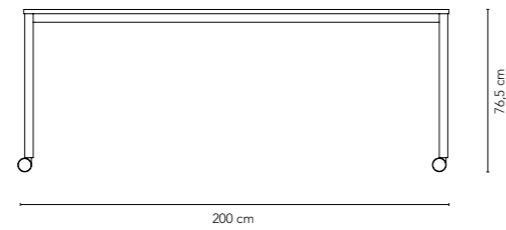
Black White

#### FRAME



Black White

### DETAILS



Upholstery:  
Hallingdal 220 / Kvadrat  
Vidar 3 333 / Kvadrat  
Harald 3 242 / Kvadrat



# SYSTEM 1-2-3

## Dining Chair

by Verner Panton, 1973

### WHY WE LOVE IT

Iconic Panton design  
Outstanding comfort and great ergonomics  
Base swivels for easy access  
Fully upholstered  
Statement piece

### SUGGESTED APPLICATION

Learning  
Care  
Hospitality  
Work  
Residential

### MATERIAL

Steel frame  
VOSS foam  
Brushed aluminium base or chrome plated butterfly base  
Various upholstery options

### DIMENSIONS

H: 86 cm (33.8")  
D: 60 cm (23.6")  
Seat width: 50 cm (19.6")  
Seat depth: 36 cm (14.1")  
Seat height front: 47 cm (18.5")  
Seat height back: 44 cm (17.3")  
Weight: 15 kg.

### BASE COLOURS



### STANDARD UPHOLSTERY OPTIONS

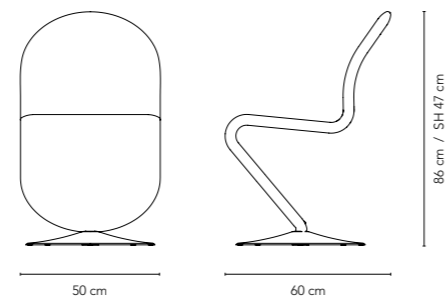
Kvadrat  
Skai  
JAB  
Dedar  
Sørensen Leather

### MADE-TO-ORDER OPTIONS

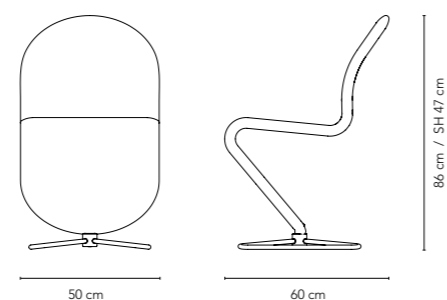
COM upholstery

### VARIANTS

#### BRUSHED ALU BASE



#### CHROME BUTTERFLY BASE



Upholstery : Vidar 333 / Kvadrat





EGAA  
GYMNASIUM  
Aarhus, Denmark

System 1-2-3 Dining Chair displayed at Egaa Gymnasium outside Aarhus, Denmark. The dining chair is used in both the canteen and meeting room settings.



Reference: Egaa Gymnasium / Aarhus  
Product: System 1-2-3 Dining Chair & Move Table  
Upholstery: Hallingdal 407 & 440 / Kvadrat



# AIR PORT

## BILLUND AIRPORT

Billund, Denmark

System 1-2-3 Dining Chair for the new King Amlet Lounge in Billund Airport. The project also includes the Series 430 Bar Stool, Cloverleaf sofa and System 1-2-3 Lounge Chair.



Upholstery: Hallingdal 270 / Kvadrat



# SYSTEM 1-2-3

## Lounge Chair

by Verner Panton, 1973

### WHY WE LOVE IT

Iconic Panton design  
Outstanding comfort and great ergonomics  
Base swivels for easy access  
Fully upholstered  
Statement piece

### SUGGESTED APPLICATION

Learning  
Care  
Hospitality  
Work  
Residential

### MATERIAL

Steel frame  
VOSS foam  
Brushed aluminium base  
Various upholstery options

### DIMENSIONS

H: 89 cm (35")  
D: 82 cm (32.3")  
Seat width: 59 cm (23.2")  
Seat depth: 45 cm (17.7")  
Seat height front: 38 cm (14.9")  
Seat height back: 34 cm (13.4")  
Weight: 20 kg.

### BASE COLOURS



Alu

### STANDARD UPHOLSTERY OPTIONS

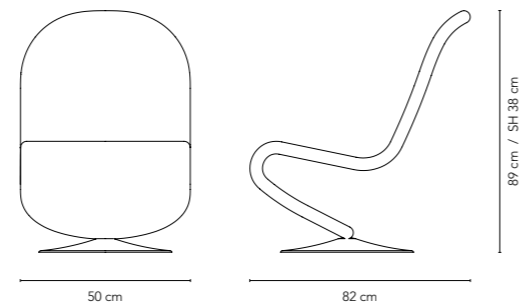
Kvadrat  
Skai  
JAB  
Dedar  
Sørensen Leather

### MADE-TO-ORDER OPTIONS

COM upholstery

### VARIANTS

#### BRUSHED ALU BASE

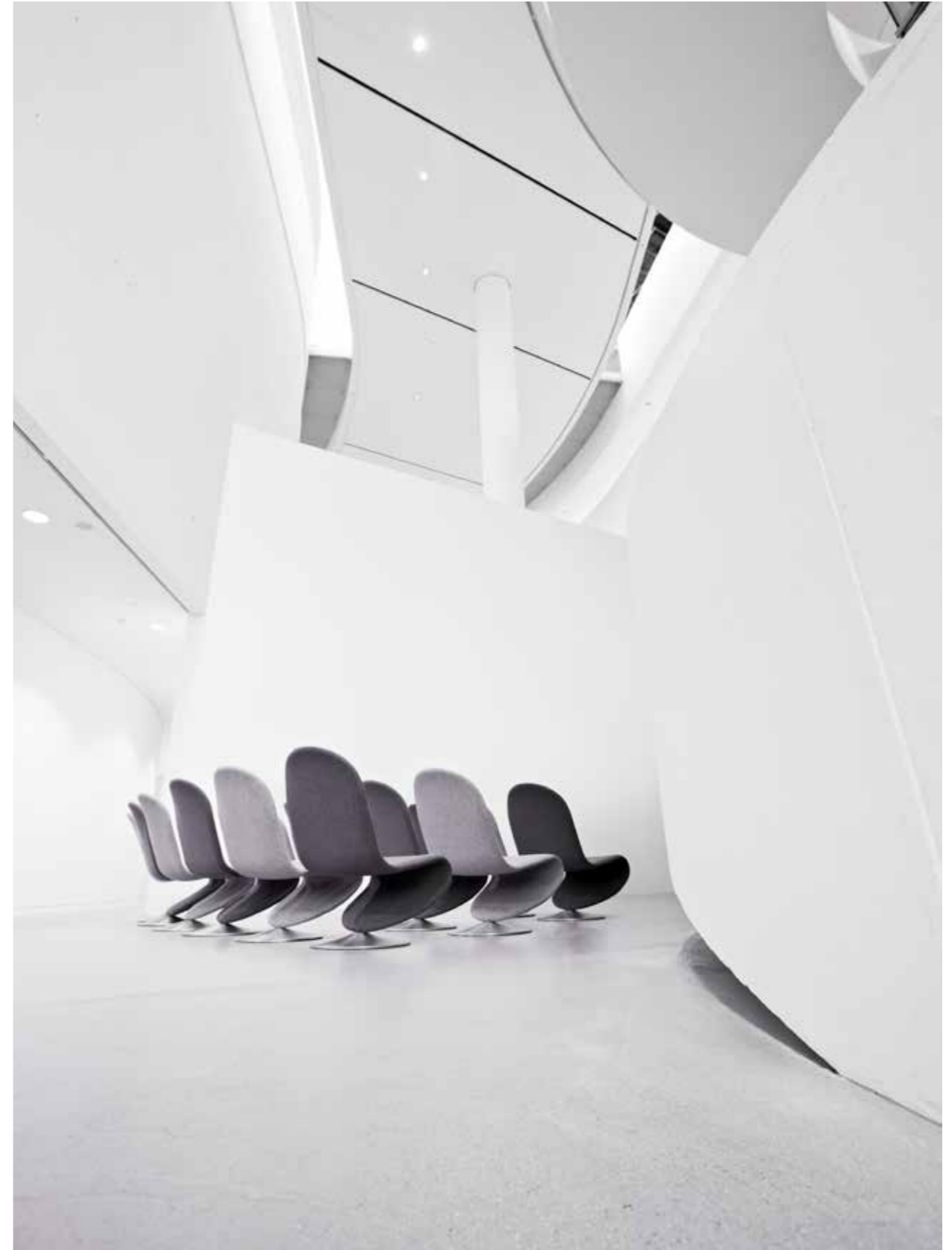


Upholstery: Pilot 792 / Kvadrat





Reference: Egaa Gymnasium / Aarhus  
 Product: System 1-2-3 Lounge Chair  
 Upholstery: Hallingdal 130 & 407 / Kvadrat



Reference: ARoS Museum of Art / Aarhus  
 Product: System 1-2-3 Lounge Chair  
 Upholstery: Hallingdal 130 & 180 / Kvadrat



# SYSTEM 1-2-3

## Rack & Mirror

by Verner Panton, 1973

### WHY WE LOVE IT

Stylish wardrobe system  
Easy to move  
Rotates 360° on its base  
The mirror tilts

### SUGGESTED APPLICATION

Hospitality  
Residential  
Work

### MATERIAL

Chrome plated steel frame  
Chrome plated butterfly base  
4mm double sided mirror (MIRROR)

### DIMENSIONS

RACK  
W: 59 cm (23.2")  
H: 169 cm (62.5")  
Weight: 10 kg.

MIRROR  
W: 59 cm (23.2")  
H: 169 cm (62.5")  
Weight: 26 kg.

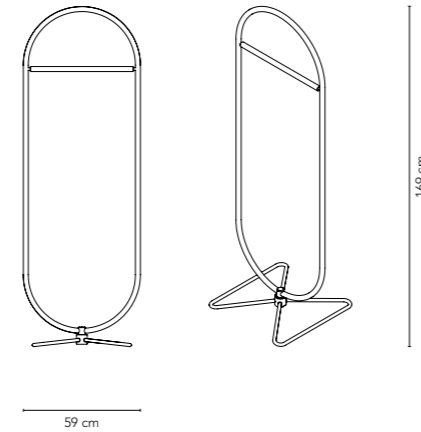
### FRAME OPTIONS



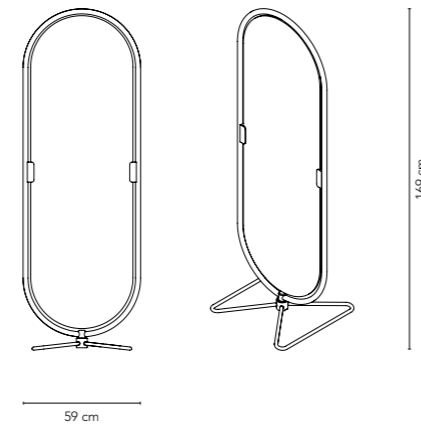
Chrome

### VARIANTS

#### RACK



#### MIRROR





# BARBOY

## Storage

by Verner Panton, 1963

### WHY WE LOVE IT

Mobile side table and storage unit  
Fun and functional  
Very versatile - works in many settings

### SUGGESTED APPLICATION

Hospitality  
Work  
Residential

### MATERIAL

Moulded painted wood  
Chrome plated castors

### DIMENSIONS

H: 72.5 cm (28.5")  
Ø38 cm (15")  
Weight: 24 kg.

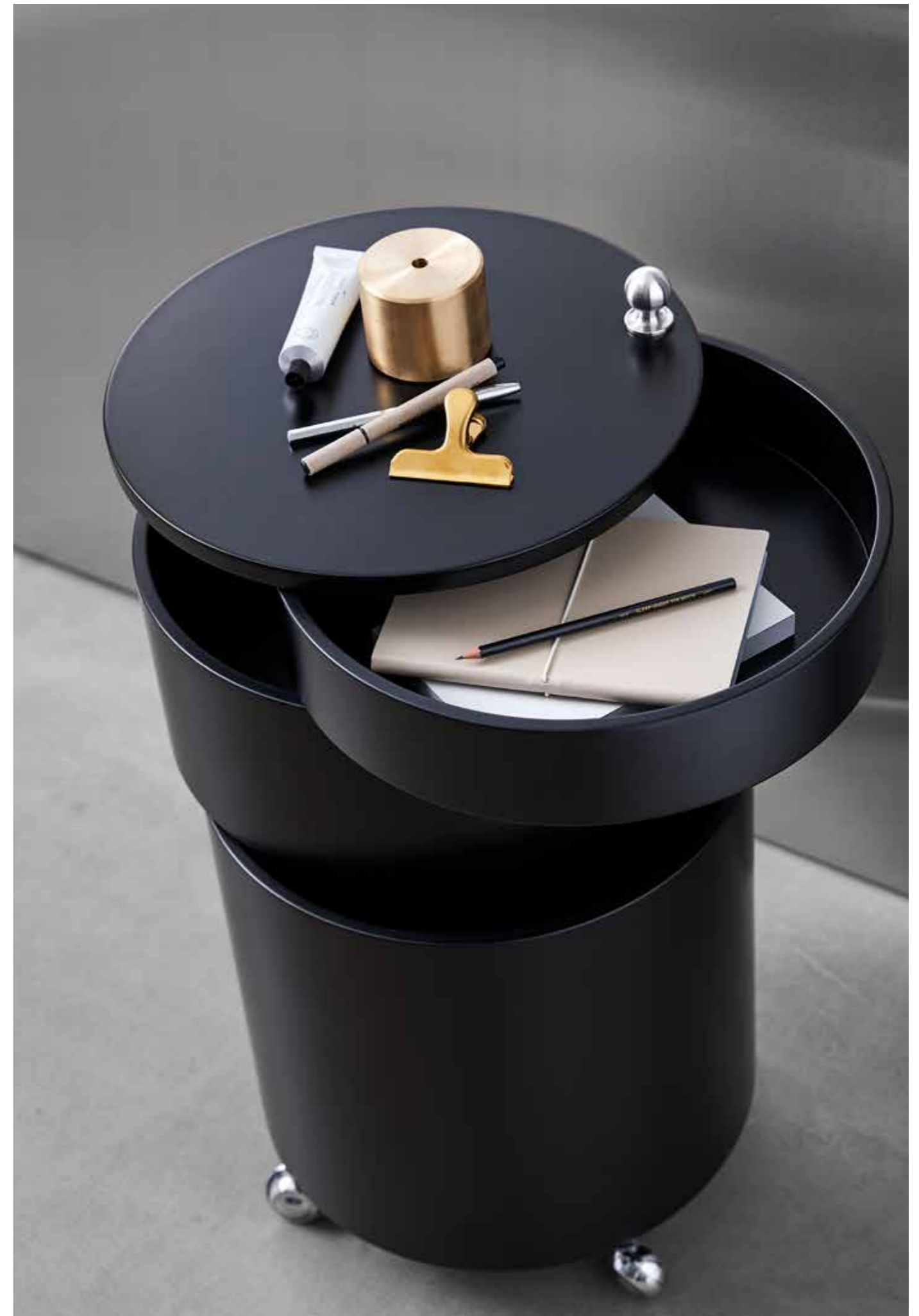
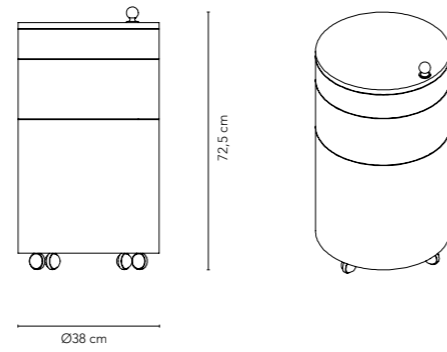
### COLOURS



### MADE-TO-ORDER OPTIONS

Available with TENTE castors

### DETAILS







104



105



# MIRROR SCULPTURES

## Wall Decoration

by Verner Panton, 1963

### WHY WE LOVE IT

Reflective wall decoration  
Endless configuration options  
Creates a very unique and interesting decor

### SUGGESTED APPLICATION

Hospitality  
Work  
Residential

### MATERIAL

3 mm (0.1") clear acrylic (PMMA)  
Metal wall mounting bracket

### DIMENSIONS

W: 48 cm (18.9")  
L: 48 cm (18.9")  
D: 10 cm (3.9") NINE  
D: 14.5 cm (5.7") FOUR  
D: 27 cm (10.6") ONE  
Weight: 3,3 kg.

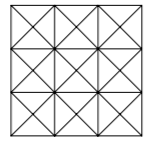
### COLOUR



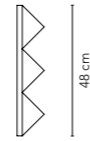
Silver  
Mirror

### VARIANTS

#### NINE



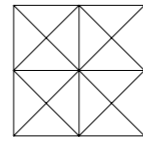
48 cm



10 cm

48 cm

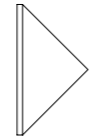
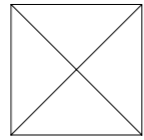
#### FOUR



14,5 cm



#### ONE



27 cm



Upholstery: Tonus 128 / Kvadrat



# WAVE

## Rug

by Verner Panton, 1973

### WHY WE LOVE IT

Iconic pattern designed by Panton  
Hand-tufted quality  
Available in three colours  
Care & Fair certified

### SUGGESTED APPLICATION

Hospitality  
Work  
Residential

### MATERIAL

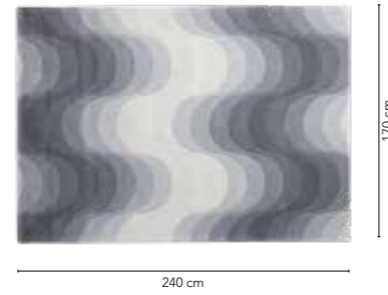
100% New Zealand wool

### DIMENSIONS

L: 240 cm (94.5")  
W: 170 cm (66.9")  
Weight: 21 kg.

### VARIANTS

#### GREY



#### ORANGE



#### YELLOW





# LUNA

## Rug

by Verner Panton, 1979

### WHY WE LOVE IT

Iconic pattern designed by Panton  
Hand-tufted quality  
Available in three colours  
Care & Fair certified

### SUGGESTED APPLICATION

Hospitality  
Work  
Residential

### MATERIAL

100% New Zealand wool

### DIMENSIONS

Ø 120 cm (47.2")  
Weight: 6.5 kg.

### VARIANTS

#### DARK YELLOW



Ø120 cm

#### GREY



#### DARK GREEN





# GRANDE

## Rug

by Verner Panton, 1965

### WHY WE LOVE IT

Iconic pattern designed by Panton  
Hand-tufted quality  
Available in two colours  
Care & Fair certified

### SUGGESTED APPLICATION

Hospitality  
Work  
Residential

### MATERIAL

100% New Zealand wool

### DIMENSIONS

Ø 220 cm (86.6")  
Weight: 22 kg.

### VARIANTS

YELLOW



Ø220 cm

GREY





# MIRROR

## Throw

by Verner Panton, 1969

### WHY WE LOVE IT

100% New Zealand wool  
Iconic pattern designed by Panton  
Great way to easily add some interest to a decor  
Available in four colours

### SUGGESTED APPLICATION

Care  
Hospitality  
Residential

### MATERIAL

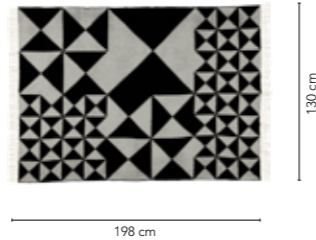
100% New Zealand wool

### DIMENSIONS

L: 198 cm (78")  
W: 130 cm (51")  
Weight: 1 kg.

### VARIANTS

BLACK



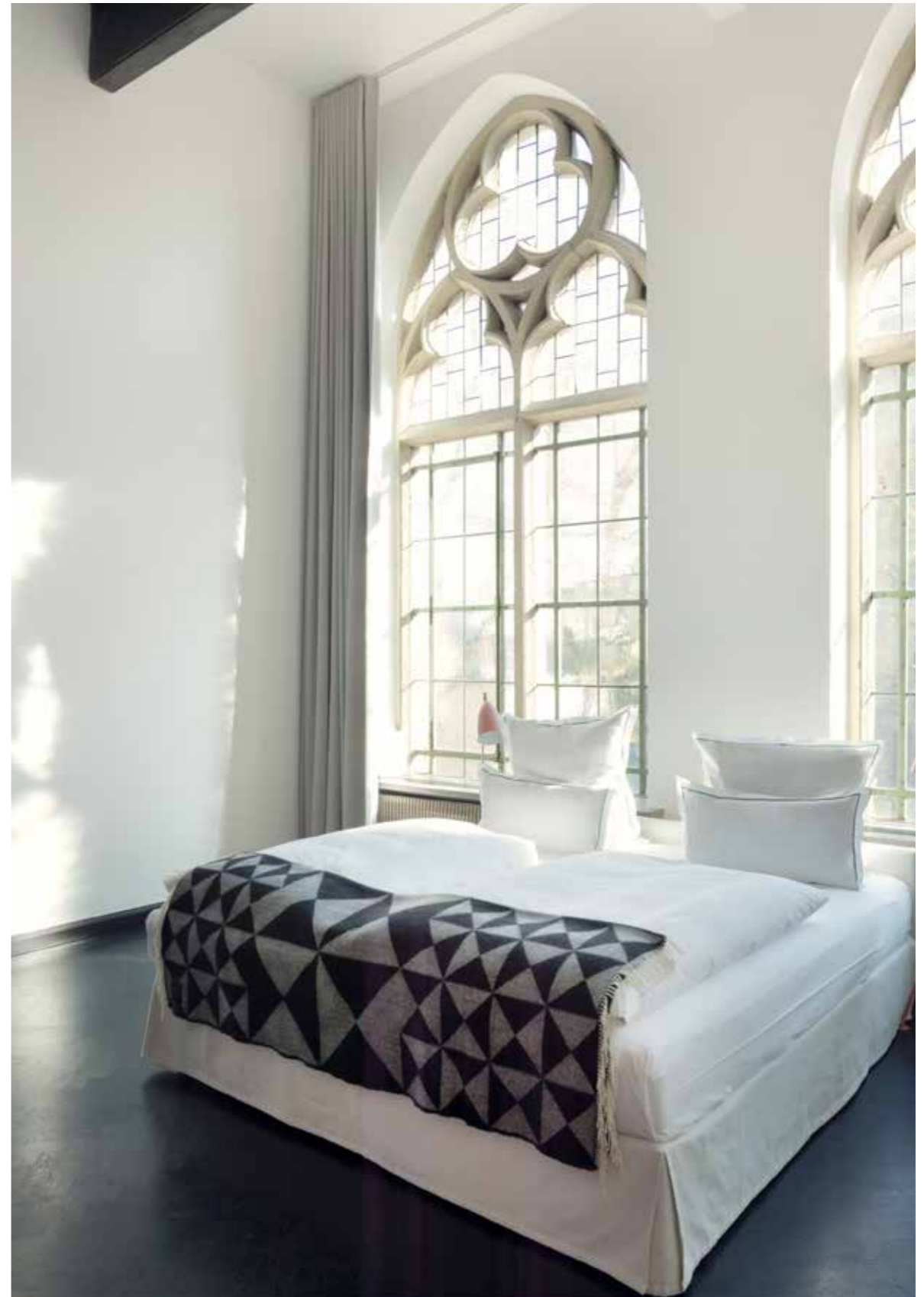
ORANGE



YELLOW



BLUE



Reference: The Quest Hotel / Cologne  
Product: Mirror Throw



# POLETTE

## Throw

by Verner Panton, 1965

### WHY WE LOVE IT

100% Alpaca wool  
Iconic pattern designed by Panton  
Great way to easily add some interest to a decor  
Available in two colours

### SUGGESTED APPLICATION

Care  
Hospitality  
Residential

### MATERIAL

100% Alpaca wool

### DIMENSIONS

L: 175 cm (69")  
W: 135 cm (53")  
Weight: 1 kg.

### VARIANTS

#### BURGUNDY



175 cm

135 cm

#### BEIGE



Upholstery: Hallingdal 180 / Kvadrat  
Ceramic: Bjarni Viðar Sigurðsson



# UPHOLSTERY PROGRAM



The Verpan Upholstery Program is an overview of textile and leather available for the Verpan upholstered furniture. The listed fabrics and leathers are available in all colours.

In addition to the options listed, we have tested several other fabrics and entered trade agreements with a number of other suppliers, which enables us to answer most customer needs. We are also happy to upholster furniture using customer's own materials (COM) with extended lead times.

For special requests, please contact our sales team.

Fabric	System 123 Standard	System 123 Deluxe	Series 430	Cloverleaf Sofa	Welle	Flying Chair	VP 168 Sofa	US Cal. Bull. 117-2013	BS 5852 Part 1 (cigarette & match)
COM/COL									
Kvadrat Messenger*	•	•	•	•	•	•	()	Yes	(Yes)
Kvadrat Metric*	•	•	•	•	•	•	()	Yes	(Yes)
Kvadrat Atlas			•	•	•	()	•	Yes	Yes <sup>1</sup>
Skai Parotega		•	•	•	•	()	()		Yes
Kvadrat Melange Nap	•	•	•	•	•	•	•	Yes	Yes <sup>1</sup>
Kvadrat Hallingdal	•	•	•	•	•	•	•	Yes	Yes + BS 5852 Crib 5
Kvadrat Tonus	•	•	•	•	•	•	•	Yes	Yes <sup>1</sup>
Kvadrat Steelcut Trio	•	•	•	•	•	()	()	Yes	Yes <sup>1</sup>
Kvadrat Merit	•	•	•	•	•	()	•	Yes	(Yes)
JAB Champion			•		•	()	•	Yes	Yes + BS 5852 Crib 5
JAB Sweet Lovin	()	()	•	•	()	()	()	Yes	(Yes)
Spradling Patriot Plus	•	•	•	•	•	•	•	Yes	
Kvadrat Harald		•	•	•		•	•		
Sacho Cuba		•	•		()	()	()	?	(Yes)
Kvadrat Vidar	•	•	•	•	•	•	•	Yes	Yes <sup>1</sup>
Kvadrat Divina 3, MD, Melange	•	•	•	•	•	•	•	Yes	V + BS 5852 Crib 5
Kvadrat Steelcut	•	•	•	•	•	()	()	Yes	Yes <sup>1</sup>
Dedar Ademo&Eva	()	()	•	•	()	()	•		(Yes)
Dedar Karakorum	•	•	•	•	•	()			Yes + BS 5852 Crib 5
Dedar Twist Again	()	()	•	()	()	()	()		(Yes)
Dedar Atlas	()	()	•	()	()	•	()		Yes + BS 5852 Crib 5
Kvadrat Waterborn	()	()	•	()		•	()	Yes	(Yes)
Kvadrat Phlox		•	•						(Yes)
Kvadrat Pilot	•		•	()				Yes	Yes <sup>1</sup>
Kvadrat Byram	()	()	•	•	()	()	()	Yes	Yes + BS 5852 Crib 5
Sørensen Ultra	•	•	•	•	•	()	()	Yes	Yes
Sørensen Hero	•	•	•	•	()	()	()		BS EN 1021-1 and 2
Sørensen Shade	•	•	•	()	()	()	()	Yes	

\*selected colours - other colours are available in other price groups

() = not tested for the specific model - test can be performed on request

(Yes) = Treatment is needed - after BS 5852 Part 1 + Crib 5 treatment is fulfilled

Yes<sup>1</sup> = BS 5852 Part 1 is fulfilled - needs treatment to fulfill BS 5852 Crib 5



**LIGHTNING**



# FUN Pendants

by Verner Panton, 1964

## WHY WE LOVE IT

Iconic design with a great story  
Glamorous and elegant design that interacts with its surroundings  
Generous light output  
Combines light, movement and sound  
Available in a number of sizes and finishes

## SUGGESTED APPLICATION

Hospitality  
Work  
Residential

## MATERIAL

Seashells  
Chrome plated metal frame (silver or brass)  
Stainless steel rings  
Black fabric cord

## DIMENSIONS

FUN 2DM  
Height: 43 cm (16.9")  
Ø: 27 cm (10.6")  
Weight: 3,0 kg.

FUN 10DM  
Height: 38 cm (14.9")  
Ø: 57 cm (22.4")  
Weight: 7,0 kg.

FUN 1DM  
Height: 60 cm (17.7")  
Ø: 45 cm (23.6")  
Weight: 5,0 kg.

FUN 11DM  
Height: 44 cm (17.30")  
Ø: 70 cm (27.6")  
Weight: 6,5 kg.

FUN 0DM  
Height: 76 cm (31.0")  
Ø: 53 cm (21.6")  
Weight: 6,5 kg.

## FRAME OPTIONS



Brass frame is available for 10DM and 11DM only.

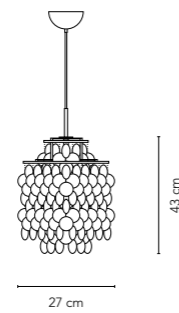
## DISC OPTIONS



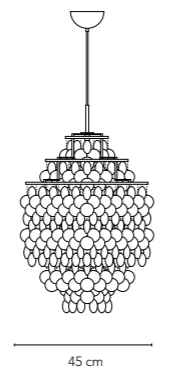
Seashell

## VARIANTS

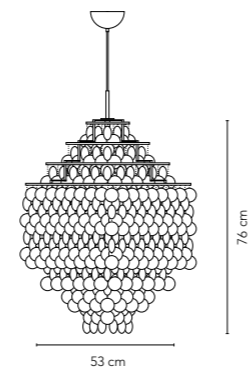
FUN 2DM



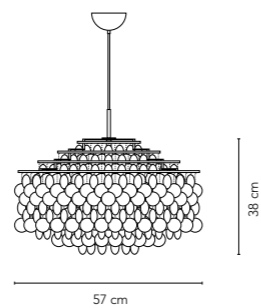
FUN 1DM



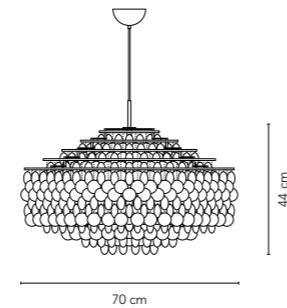
FUN 0DM



FUN 10DM



FUN 11DM



Upholstery: Harald 3 582 / Kvadrat







125

## MOTEL ONE ROSTOCK

Rostock, Germany

For its reception and restaurant area, Motel One in Rostock decided to go with a selection of Panton's FUN pendants and even requested a custom installation of the seashells.

The selection features the impressive FUN 8DM and a number of FUN 2DM and FUN 1DM pendants.

Photo credit: Motel One





# FUN

## Table Lamps

by Verner Panton, 1964

### WHY WE LOVE IT

Iconic design with a great story  
Glamorous and elegant design that interacts with its surroundings  
Generous light output  
Combines light, movement and sound  
Attractive sizes with many application options

### SUGGESTED APPLICATION

Hospitality  
Work  
Residential

### MATERIAL

Seashells  
Chrome plated metal frame (silver or brass)  
Stainless steel rings  
Black fabric cord

### DIMENSIONS

126	FUN 2TM Height: 43 cm (16.9") Ø: 27 cm (10.6") Weight: 3,0 kg.	FUN 1TM Height: 65 cm (25.6") Ø: 40 cm (15.8") Weight: 8,0 kg.
-----	---	---

### FRAME OPTIONS



Steel Brass

Brass frame is available for 2TM only.

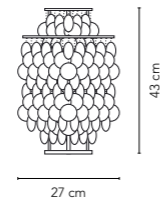
### DISC OPTIONS



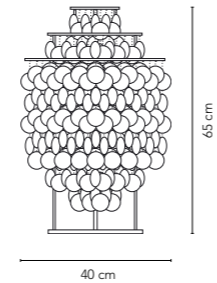
Seashell

### VARIANTS

FUN 2TM



FUN 1TM





# FUN Wall

by Verner Panton, 1964

## WHY WE LOVE IT

Iconic design with a great story  
Glamorous and elegant design that interacts with its surroundings  
Generous light output  
Combines light, movement and sound  
Available in a number of sizes and finishes

## SUGGESTED APPLICATION

Hospitality  
Work  
Residential

## MATERIAL

Seashells  
Chrome plated metal frame  
Stainless steel rings

## DIMENSIONS

FUN 1WM  
H: 58 cm (22.8")  
D: 22 cm (8.7")  
W: 40 cm (15.7")  
Weight: 4 kg.

## FRAME OPTIONS



Steel

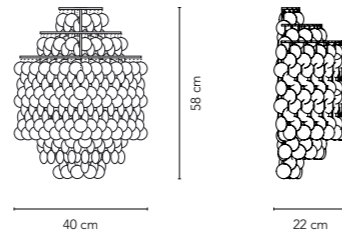
## DISC OPTIONS



Seashell

## VARIANTS

### FUN 1WM



Reference: Restaurant La Fonda, Cologne  
Product: FUN 1WM  
Photo credit: Jo Fober





# FUN Floor

by Verner Panton, 1964

## WHY WE LOVE IT

Iconic design with a great story  
Glamorous and elegant design that interacts with its surroundings  
Generous light output  
Combines light, movement and sound

## SUGGESTED APPLICATION

Hospitality  
Work  
Residential

## MATERIAL

Seashells  
Chrome plated metal frame (silver or brass)  
Stainless steel rings

## DIMENSIONS

FUN 1STM  
H: 120 cm (47.2")  
Ø40 cm (15.8")  
Weight: 10 kg.

## FRAME OPTIONS



Steel Brass

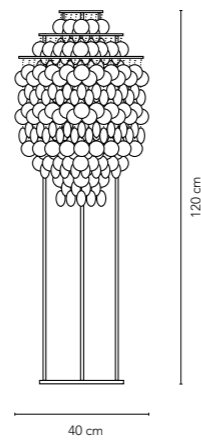
## DISC OPTIONS



Seashell

## VARIANTS

### FUN 1STM





# FUN

## XL Pendants

by Verner Panton, 1964

### WHY WE LOVE IT

Iconic design with a great story  
Glamorous and elegant design that interacts with its surroundings  
Generous light output  
Combines light, movement and sound  
Large pieces that can really elevate a decor

### SUGGESTED APPLICATION

Hospitality  
Work  
Residential

### MATERIAL

Seashell discs  
Stainless steel rings  
Ceiling plate is made of MDF (white lacquered).  
Transparent plastic cord.

### DIMENSIONS

132 FUN 4DM  
Height: 110 cm (43.3")  
Ø: 56 cm (22.1")  
Weight: 14 kg.

FUN 3DM  
Height: 240 cm (94.4")  
Ø: 56 cm (22.1")  
Weight: 21 kg.

FUN 5DM  
Height: 180 cm (70.9")  
Ø: 56 cm (22.1")  
Weight: 19 kg.

### CANOPY COLOUR



White

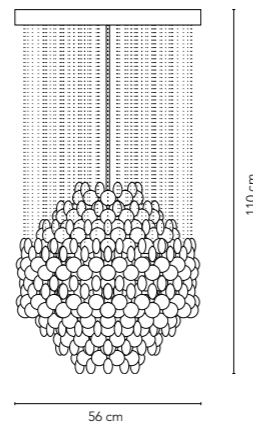
### DISC OPTIONS



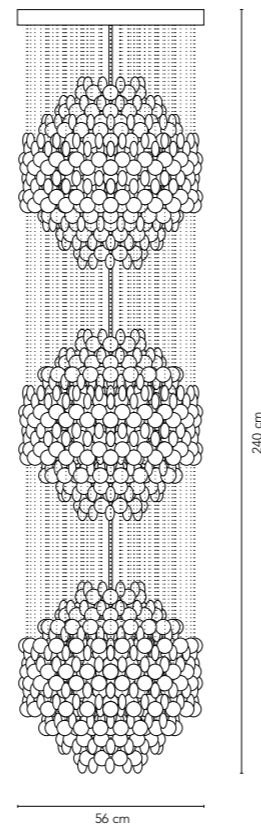
Seashell

### VARIANTS

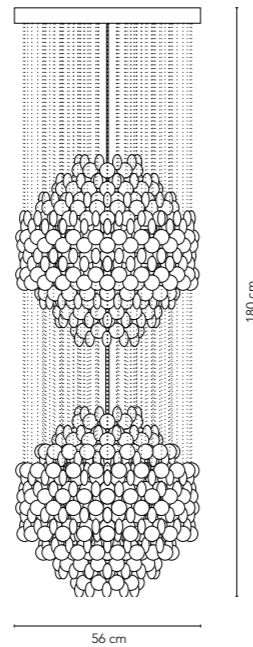
FUN 4DM



FUN 3DM



FUN 5DM



Upholstery: Vidar 182 / Kvadrat



# FUN

## XL Pendants

by Verner Panton, 1964

### WHY WE LOVE IT

Iconic design with a great story  
Glamorous and elegant design that interacts with its surroundings  
Generous light output  
Combines light, movement and sound  
Large pieces that can really elevate a decor

### SUGGESTED APPLICATION

Hospitality  
Work  
Residential

### MATERIAL

Seashell discs  
Stainless steel rings  
Ceiling plate is made of MDF (white lacquered).  
Transparent plastic cord.

### DIMENSIONS

134 FUN 7DM  
Height: 110 cm (43.3")  
Ø: 100 cm (39.4")  
Weight: 30 kg.

FUN 8DM  
Height: 200 cm (78.9")  
Ø: 100 cm (39.4")  
Weight: 45 kg.

### CANOPY COLOUR

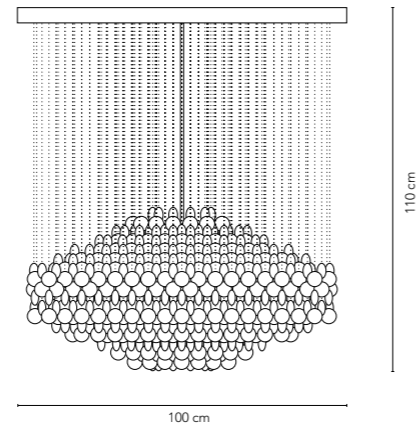
White

### DISC OPTIONS

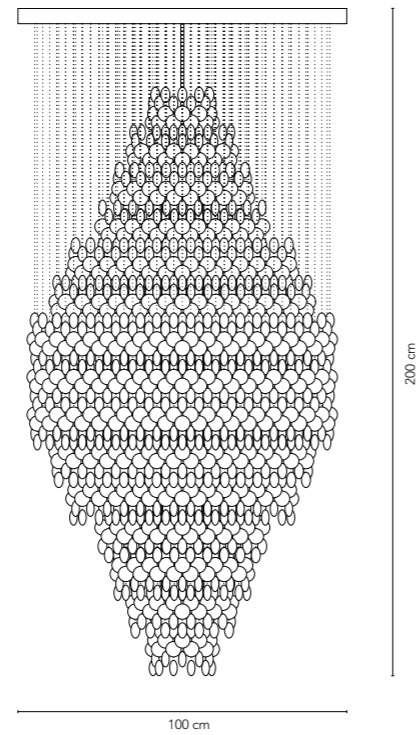
Seashell

### VARIANTS

#### FUN 7DM



#### FUN 8DM





# RESTAURANT

## CAFÉ STIFTEN

Aarhus, Denmark

Café Stiften is located in the heart of Aarhus and serves a large and diverse crowd from breakfast to late night drinks. The atmosphere is rugged with exposed brick walls and large windows facing the busy street outside.

As a soft counter to the brick walls and glass, Pantón's FUN pendants illuminate the space in cascades of soft ambient light creating a cozy urban atmosphere.



# VP GLOBE

## Pendant

by Verner Panton, 1969

### WHY WE LOVE IT

Arguably the most recognized Panton lighting design  
Futuristic and sculptural design that interacts with its surroundings  
The different executions of the design allows for different expressions  
Decorative mood setting light output

### SUGGESTED APPLICATION

Hospitality  
Work  
Residential

### MATERIAL

Acrylic outer top and bottom shell  
Reflectors are suspended in steel chains  
Canopy made from chrome plated metal

Reflector material:  
VP Globe - polished aluminium  
VP Globe Brass Finish - brass plated aluminium  
VP Globe Glass - opal glass  
VP Globe Coloured Glass - coloured glass & polished aluminium

### DIMENSIONS

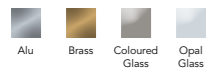
VP GLOBE  
Ø: 40 cm (15.8") / Ø50 (19.7")  
Weight: 5 kg / 9 kg.

VP GLOBE Brass Finish  
Ø: 40 cm (15.8")  
Weight: 5 kg

VP GLOBE Glass  
Ø: 40 cm (15.8") / Ø50 (19.7")  
Weight: 5 kg / 9 kg.

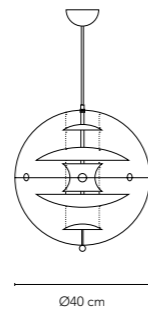
VP GLOBE Coloured Glass  
Ø: 40 cm (15.8")  
Weight: 5 kg

### COLOURS

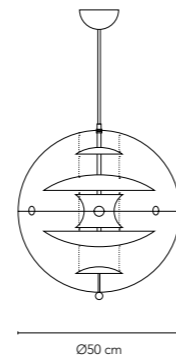


### VARIANTS

VP GLOBE ø40



VP GLOBE ø50





Vit Globe



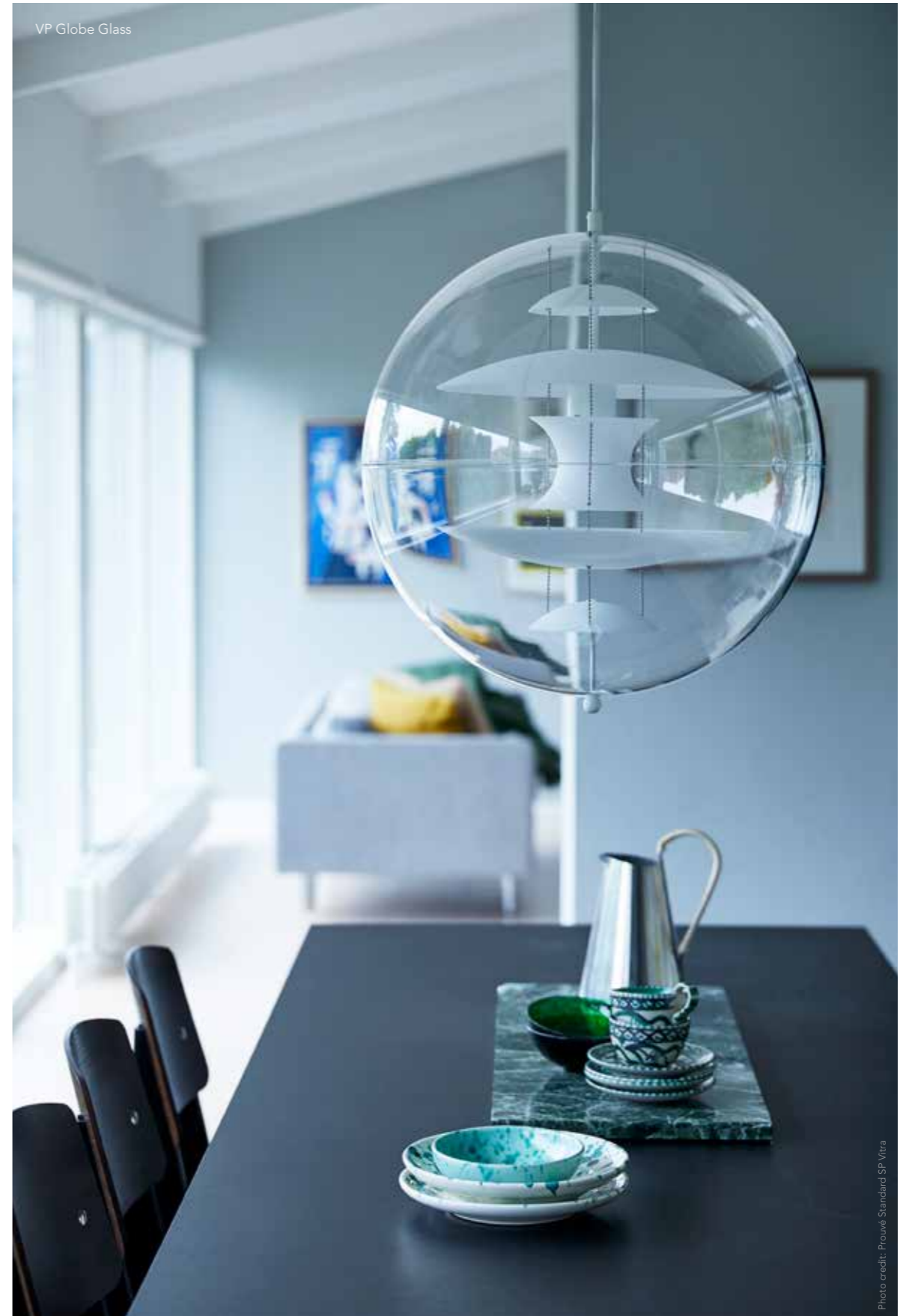
140

141

VP Globe



VP Globe Glass

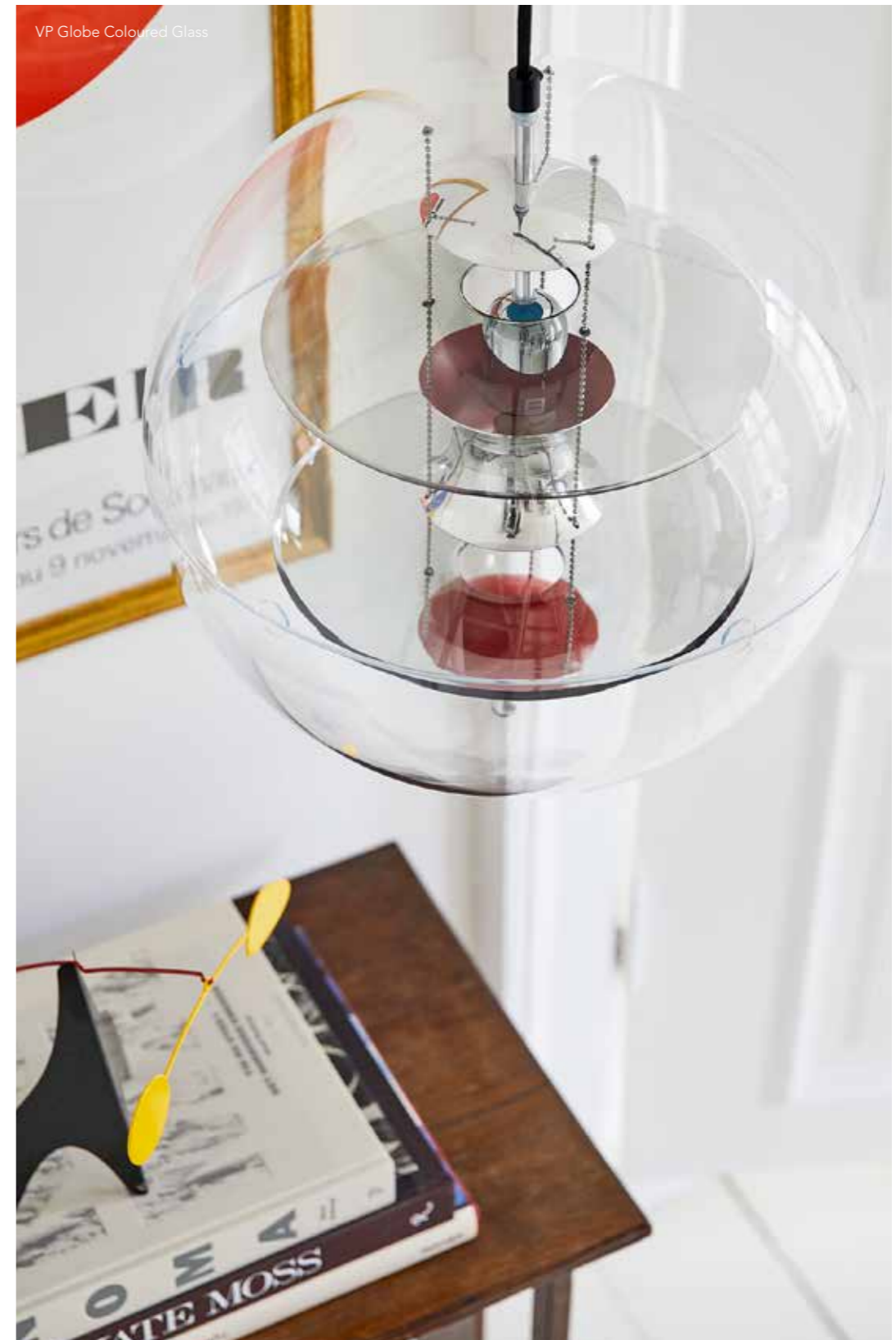




VP Globe Brass Finish



VP Globe Coloured Glass



# RES TAU RANT

CAFÉ  
JEOKDANG  
Seoul, Korea

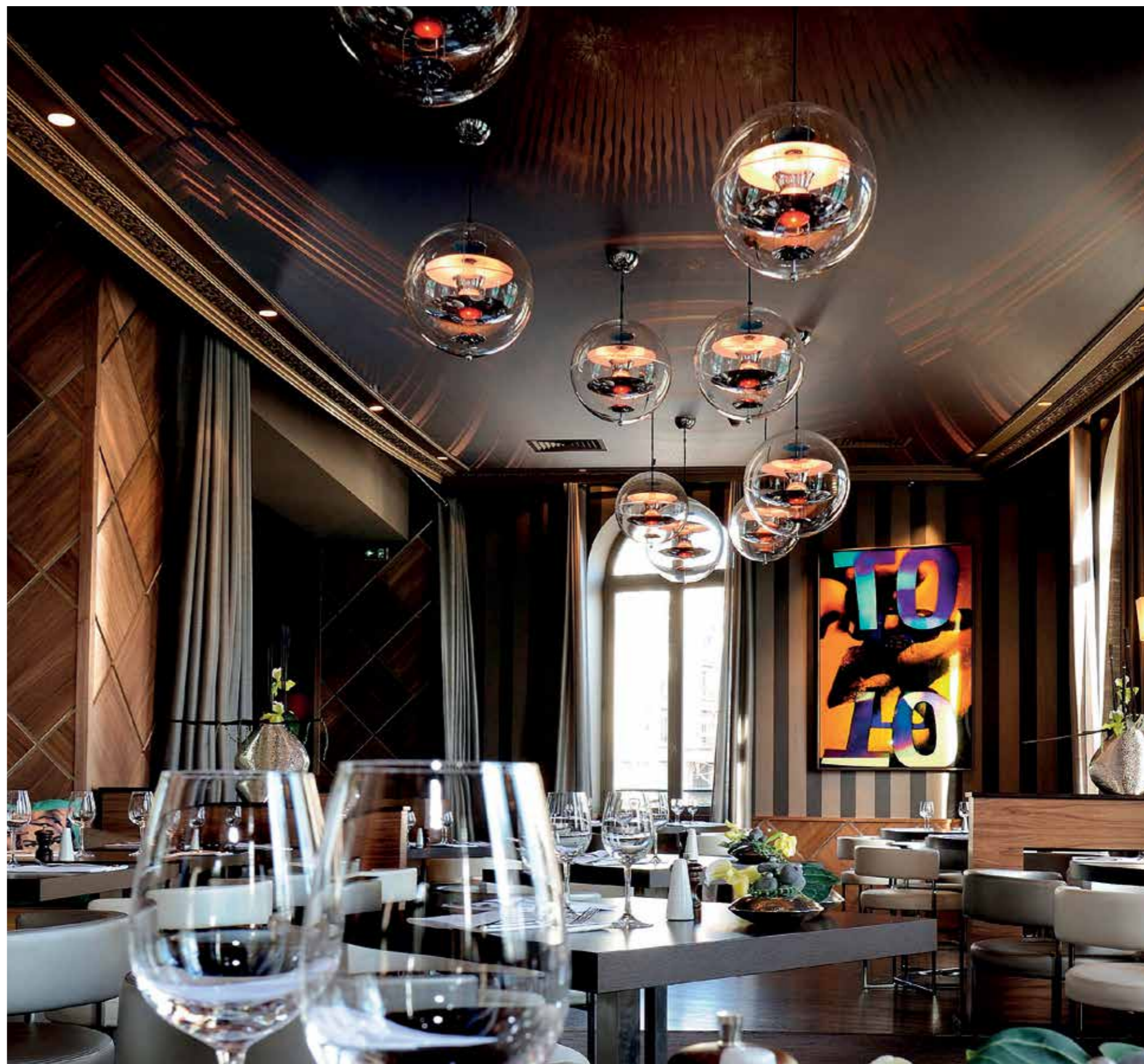
A number of Pantón's VP Globe pendants suspended above the beautiful massive wood tables in the Jeokdang Café in Seoul.

Photo credit: Café Jeokdang





Reference: Restaurant L'Arc/ Paris  
Product: VP Globe





# PANTO

## Pendant

by Verner Panton, 1977

### WHY WE LOVE IT

Classic variation of the iconic VP Globe design  
Futuristic and sculptural design that interacts with its surroundings  
Decorative mood setting light output

### SUGGESTED APPLICATION

Hospitality  
Work  
Residential

### MATERIAL

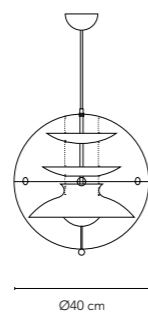
Acrylic outer top and bottom shell  
Reflectors made from lacquered aluminium  
Reflectors are suspended in steel chains  
Canopy made from lacquered metal

### DIMENSIONS

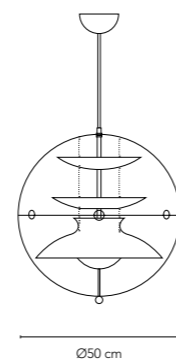
PANTO  
Ø: 40 cm (15.8") / Ø50 (19.7")  
Weight: 5 kg / 10 kg.

### VARIANTS

PANTO ø40



PANTO ø50





Reference: Briig Boutique Hotel, Split  
Product: Panto Pendant  
Architect: Maja Tedeschi  
Photo credit: Nord Klassik



# HIVE

## Pendant

by Verner Panton, 1977

### WHY WE LOVE IT

Generous downward light and a soft and diffused lateral light  
Layered shades concealing the light source  
Very characteristic and sculptural quality

### SUGGESTED APPLICATION

Hospitality  
Work  
Residential

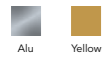
### MATERIAL

Aluminium shades  
Polished aluminium (alu) or powder coated finish (yellow)  
Ceiling canopy in same colour/finish as lamp.

### DIMENSIONS

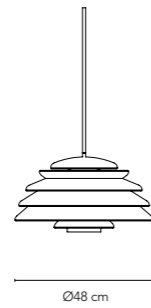
Ø: 48 cm (19")  
Weight: 3,7 kg

### COLOURS



Alu Yellow

### VARIANTS







# SPIEGEL

## Wall & Ceiling

by Verner Panton, 1969

### WHY WE LOVE IT

Architectural and sculptural lighting art piece  
Great attention piece  
Stunning single-piece statement or dramatic large-scale installation  
For wall or ceiling mounting  
Ambient lighting with zero glare

### SUGGESTED APPLICATION

Hospitality  
Work  
Residential

### MATERIAL

Made from welded steel  
Painted silver finish

### DIMENSIONS

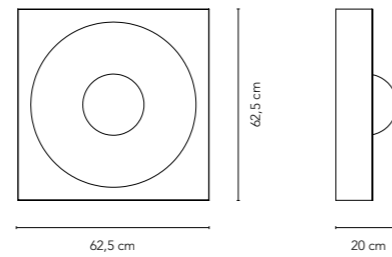
W: 62,5 cm (24.6")  
H: 62,5 cm (24.6")  
D: 20 cm (7.9")  
Weight: 5,4 kg.

### COLOURS



Silver

### VARIANTS



Reference: Artilleriet Store / Göteborg  
Product: Spiegel  
Photo credit: Artilleriet







Upholstery:  
Royal Nubuck Lava 30254 / Sørensen Leather  
Hallingdal 180 / Kvadrat  
Harald 3 343 / Kvadrat

Ceramic: Lars Rank Keramik

# SPIRAL

## Pendants

by Verner Panton, 1969

### WHY WE LOVE IT

Iconic design with a great story  
 Playful design that interacts with its surroundings  
 Generous light output  
 Combines light, movement and sound  
 Available in a number of sizes and materials

### SUGGESTED APPLICATION

Hospitality  
 Work  
 Residential

### MATERIAL

Cast ABS plastic  
 Nylon string  
 Ceiling canopy is made from cast ABS plastic  
 Transparent plastic cord

### DIMENSIONS

MINI  
 Height: 55 cm (21.7")  
 Ø: 34 cm (13.4")  
 Weight: 5 kg.

SP01  
 Height: 60 cm (23.6")  
 Ø: 45 cm (17.7")  
 Weight: 7 kg.

### FRAME OPTIONS



Steel Gold

### SPIRAL COLOURS

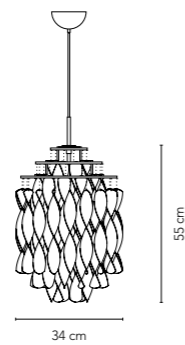


Gold Silver Multi

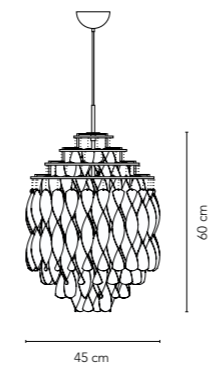
Spiral Mini is only available in silver.

### VARIANTS

MINI



SP01



Upholstery: Harald 3 182 / Kvadrat

Photo credit: Stool 60 Arek











# SPIRAL

## XL Pendants

by Verner Panton, 1969

### WHY WE LOVE IT

Iconic design with a great story  
 Playful design that interacts with its surroundings  
 Ambient light output  
 Combines light, movement and reflections  
 Large pieces that can really elevate a decor

### SUGGESTED APPLICATION

Hospitality  
 Work  
 Residential

### MATERIAL

Cast ABS plastic  
 Nylon string  
 Ceiling canopy is made from cast ABS plastic  
 Transparent plastic cord

### DIMENSIONS

168 SPIRAL SP1  
 H: 115 cm (45.3")  
 Ø48 cm (18.9")  
 Weight: 11 kg.

SPIRAL SP3  
 H: 220 cm (86.6")  
 Ø48 cm (18.9")  
 Weight: 17 kg.

SPIRAL SP2  
 H: 180 cm (70.9")  
 Ø48 cm (18.9")  
 Weight: 14 kg.

### CANOPY COLOURS

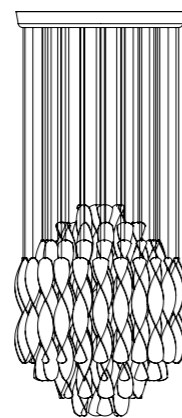


### SPIRAL COLOURS



### VARIANTS

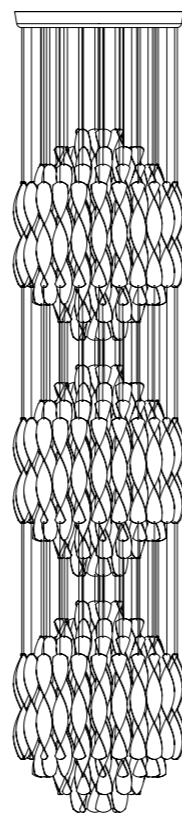
SP1



48 cm

115 cm

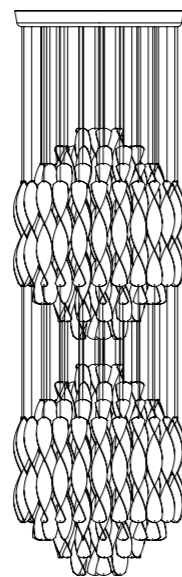
SP3



48 cm

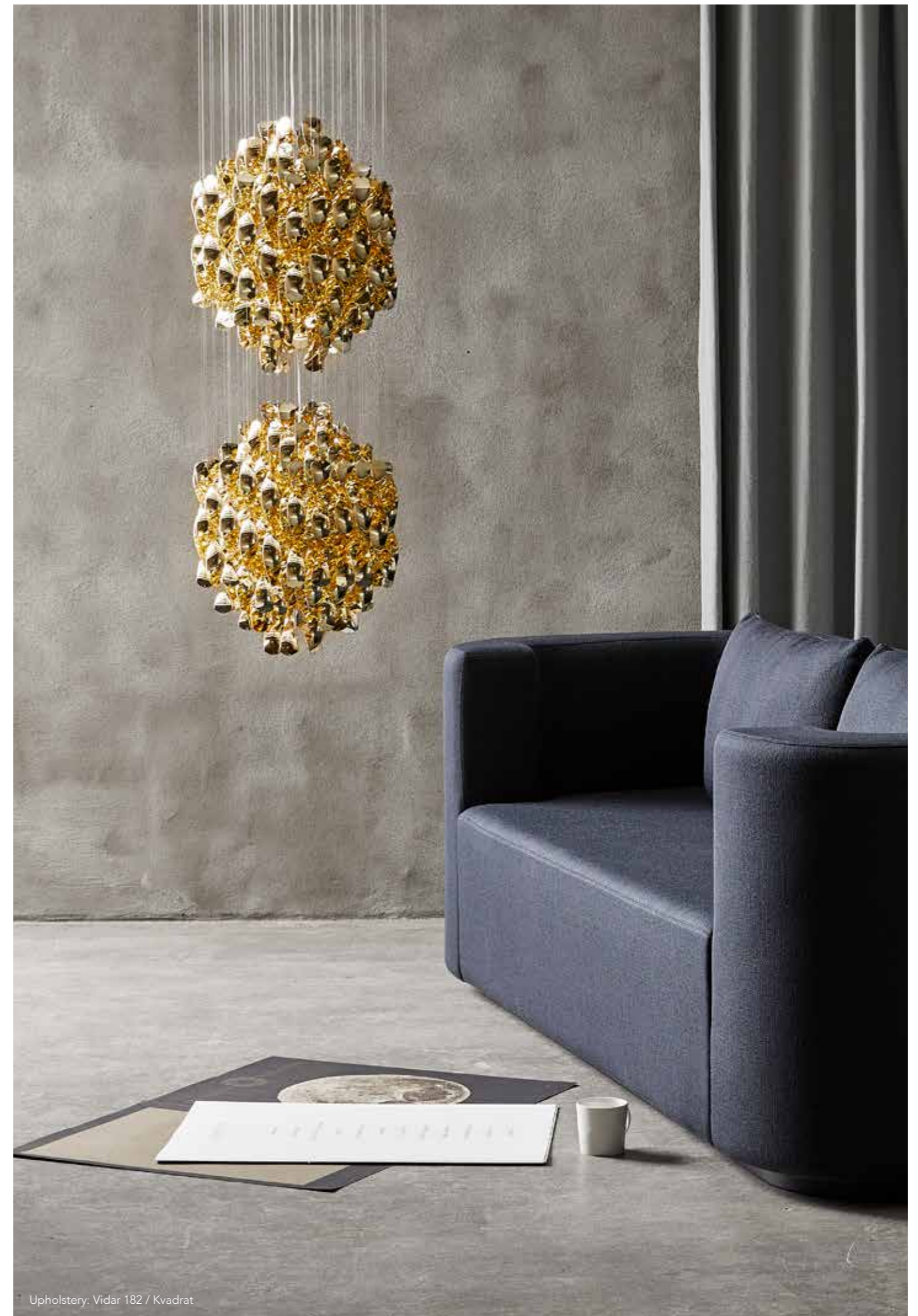
220 cm

SP2



48 cm

180 cm



Upholstery: Vidar 182 / Kvadrat



Reference: Horsens New Theatre, Horsens  
Product: Spiral SP01, SP2, SP3 & Ball Pendants  
Architect: Christian Fogh



170

171



# PANTOP

## Series

by Verner Panton, 1980

### WHY WE LOVE IT

Classic bell design with decorative and functional light  
Great size and beautiful finish  
Perfect for series installation

### SUGGESTED APPLICATION

Hospitality  
Work  
Residential

### MATERIAL

All parts are made from metal  
Brass plating

### DIMENSIONS

PENDANT  
Height: 25 cm (9.8")  
Ø45 cm (17.7")  
Weight: 1,4 kg.

### SHADE OPTIONS

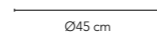
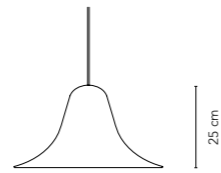
#### PENDANT



Antique  
Brass

### VARIANTS

#### PENDANT



# REFLECT

## Table Lamp

by Verner Panton, 1980

### WHY WE LOVE IT

Modern design with decorative ambient light  
Strong character and presence  
Concealed light source

### SUGGESTED APPLICATION

Hospitality  
Work  
Residential

### MATERIAL

All parts are made from steel  
Powder coated finish  
Vertical stem is finished in satin

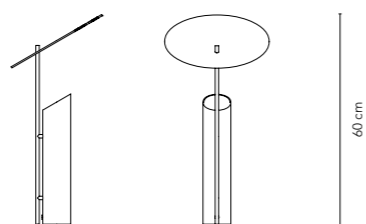
### DIMENSIONS

Shade: Ø30 cm (12")  
H: 60 cm (23.6")  
Base: Ø 8 cm (3,15")  
Weight: 4,2 kg.

### COLOURS



### VARIANTS







# WIRE

## Series

by Verner Panton, 1972

### WHY WE LOVE IT

Futuristic design  
Generous ambient light  
Super versatile

### SUGGESTED APPLICATION

Hospitality  
Work  
Residential

### MATERIAL

Frame is made from chrome plated steel  
Shade is made from white plastic

### DIMENSIONS

TABLE LAMP  
H: 54 cm (21.3")  
Ø40 cm (15.8")  
Weight: 5 kg.

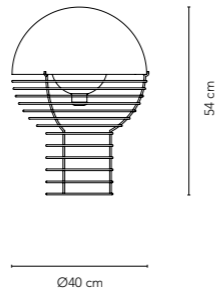
FLOOR LAMP  
Diameter: 40 cm (15.8")  
Height: 120 cm (47.3")  
Weight: 5,5 kg.

### SHADE OPTIONS

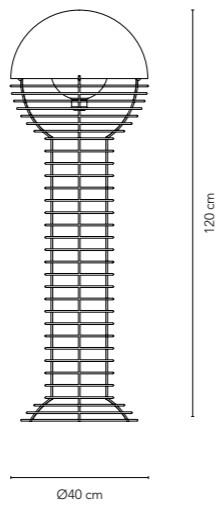


### VARIANTS

#### TABLE LAMP



#### FLOOR LAMP



Upholstery : Vidar 333 / Kvadrat





Ceramics: BO/THYRRESTRUP Design



Upholstery: Hallingdal 116 / Kvadrat



Upholstery: Harald 3 283 / Kvadrat



Reference: Deloitte, Aarhus  
Product: Wire Table Lamp, Cloverleaf Sofa & Barbooy  
Upholstery: Hallingdal 116 / Kvadrat

# MOON Pendants

by Verner Panton, 1960

## WHY WE LOVE IT

One of Panton's earliest lighting designs  
Beautiful spherical design  
Soft and ambient light output  
Great as single piece or in clusters  
Available in three sizes

## SUGGESTED APPLICATION

Hospitality  
Work  
Residential

## MATERIAL

Lamellae and canopy is made from lacquered metal

## DIMENSIONS

SMALL  
Ø34 cm (13.4")  
Weight: 4,5 kg.

LARGE  
Ø44,5 cm (17.5")  
Weight: 8 kg.

XXXL  
Ø: 150 cm (59.1")  
Weight: 125 kg.

## SHADE OPTIONS

### SMALL

White Orange

### LARGE & XXXL

White

## VARIANTS

### SMALL



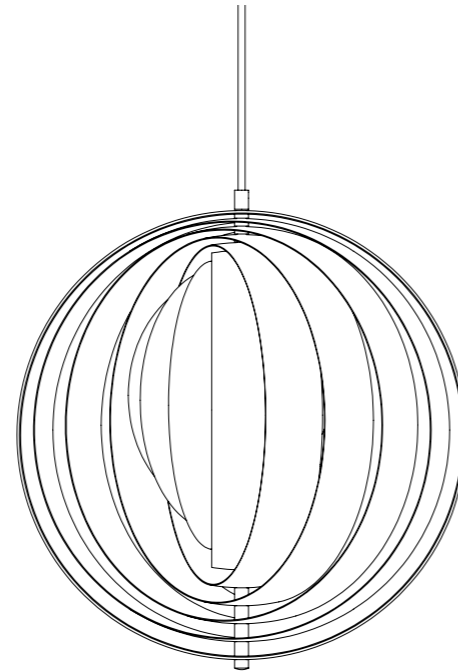
Ø34 cm

### LARGE



Ø44,5 cm

### XXXL



Ø150 cm





FELORE



Reference: Briig Boutique Hotel, Split  
Product: Moon Pendant  
Photo credit: Nord Klassik



Reference: Skanderborg Kulturhus, Skanderborg  
 Product: Moon XXXL Pendant



Reference: District Court, Svendborg  
 Product: Moon XXXL Pendant





Reference: High Court of Western Denmark, Viborg  
Product: Moon XXXL Pendant

# ONION Pendants

by Verner Panton, 1977

## WHY WE LOVE IT

Organic onion shaped design  
Soft and ambient light output  
Available in two sizes

## SUGGESTED APPLICATION

Hospitality  
Work  
Residential

## MATERIAL

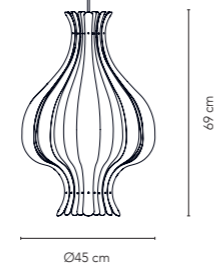
Shade and canopy are made of lacquered metal

## DIMENSIONS

SMALL/Ø45  
H: 69 cm (27.2")  
Ø45 cm (17.7")  
Weight: 10 kg.

## VARIANTS

SMALL





**“The main purpose of my work is to provoke people into using their imagination and make their surroundings more exciting.”**

- Verner Panton

**VERPAN**

[www.verpan.com](http://www.verpan.com)